

羅府新報

金

FRIDAY

日本語欄

コンテンツ

トップニュース
(米国・日本・国際)
コミュニティー
スポーツ

産経新聞

japan-at-a-glance



INAUGURAL MASS: Pope Leo XIV waves to the crowd from the popemobile in St. Peter's Square at the Vatican on May 18, prior to his inaugural Mass later in the day. World figures, including U.S. Vice President JD Vance, attended. "It is the hour of love," the 267th pontiff said during the service, calling to build a Catholic Church that "opens its arms to the world." The first American in the role, Pope Leo XIV was elected on May 8 to succeed the late Pope Francis. The Japanese government sent former Prime Minister Taro Aso, a Catholic and top advisor to the ruling Liberal Democratic Party, to the event to help "deepen friendly and cooperative ties" with the Vatican. The pope visited Nagasaki in 2008, when he was known as Robert Prevost, to attend the beatification of 188 Japanese martyrs by Pope Benedict XVI, according to Catholics in the southwestern Japan city. Father Futoshi Matsuo of Shiroyama Catholic Church, one of the local Catholics who met him then, said, "He was a person who listened warmly to what others had to say, rather than speak himself."

HIROSHIMA VISIT: Emperor Naruhito and Empress Masako will visit Hiroshima next month to honor the war dead ahead of the 80th anniversary of the end of World War II, marking their first trip to the atomic-bombed city since his accession in 2019, the Imperial Household Agency said May 19. After arriving from Tokyo's Haneda airport on June 19, the imperial couple will offer flowers and a silent prayer at a cenotaph for atomic bomb victims in Hiroshima Peace Memorial Park, before viewing an exhibition on building remnants and hearing testimonies from survivors at the Hiroshima Peace Memorial Museum, the agency said. The following day, they will meet with residents of a nursing home for atomic bomb survivors and observe the reconstruction progress from a landslide in August 2014.

NO NOTICE: The U.S. Navy said one of its officers has been indicted on murder and other charges in connection with the death of his American wife, whose body was found at a hotel in Fukuoka, southwestern Japan, in October. The indictment was filed on May 7, but Fukuoka police have yet to receive official notification from U.S. authorities, according to a Japanese investigative source. The case underscores how the bilateral Status of Forces Agreement limits Japan's jurisdiction over crimes involving U.S. military personnel. Under the pact, the U.S. has primary jurisdiction over offenses involving its service members, civilian employees and their dependents. While unofficial notices are sometimes given to Japanese authorities, the details of such communication remain unclear.

in the news

BIDEN DIAGNOSIS: Former President Joe Biden was diagnosed with an "aggressive form" of prostate cancer, according to a statement from his personal office May 18, and it has spread to his bones. Biden, 82, and his family "are reviewing treatment options with his physicians," the statement said. Rep. Mark Takano (D-Riverside) commented, "My heart is with President Biden and his family, and I am praying for his recovery. May he have many more years of joy and happiness with his loved ones."

INSIDE TODAY'S RAFU

- Sports2
- Arts & Entertainment.....2
- Classifieds / Legal Notices4
- Columnists / Obituaries5
- Religion / Calendar of Events..6

City of Torrance Unveils New WWII Camp Wall Design

The World War II Camp Wall (WWIICW) was on the April 22 Torrance City Council meeting agenda.

Torrance Community Services and General Services presented a schematic design for the monument at Columbia Park. They sought inclusion of the project in the 2025 State Legislative Advocacy Priority Project and sought approval for the extension of the existing grant from the state, and for funding to allow for staff to proceed with construction documents.

The current grant that was secured by Assemblymember Al Muratsuchi, in the amount of \$5 million, to educate the public on mass incarceration of Japanese Americans during World War II comes due on March 1, 2026. City staff stated that in order to ensure accuracy in the name verification, additional time and funding are needed.

They requested an additional \$4.99 million from the state as part of an upcoming delegation trip to Sacramento and also requested that the existing grant be extended to December 2026.

Tina Chee of the architectural firm Chee Salette made a presentation of the new project design. She stated that historical imagery was explored and other monuments were researched in coming up with the new design, which consists of black granite with the walls displayed along rows of a timeline, and surrounded by trees to create a tranquil space.

The path leads up to a hilltop from which you can reminisce on what

you've seen.

Discussion was opened up to the public. Brett Smith of the WWIICW nonprofit mentioned that inclusion of all ethnicities of those that were incarcerated during World War II was the vision of the founder of the project, the late Kanji Sahara. He mentioned that the names of those that are not of Japanese ancestry might be added at a future date.

Alvin Takamori, also from the nonprofit, stated that this is not

many times, and included in Sahara's vision was the idea that "never again" should not be limited to one group of people.

John La Rock of Torrance Community Services explained that the State Legislature's language funds the monument to list the names of those of Japanese descent. Oda stated that the original grant called for the names of Japanese Americans and therefore would not have included the names of Issei.

The wall project is sourcing the more than 125,000 names from Dr. Duncan Ryuken Williams via his Ireichō project. The names of Germans and Italians are not included in that project at this time because they have not all been properly researched and verified.

Danny Salta- no from the City Manager's Office confirmed that the city can

always add more names should they be shown to be accurate.

Councilmember Sharon Kalani asked whether there would be another increase in cost due to upcoming tariffs. Chee responded that the granite is being sourced from within the U.S.

The possibility of other sources raising additional funds was brought up. The possibility of the city guaranteeing the funding for this project from the 2025-26 city budget was discussed.

Mayor George Chen stated that if needed, the project needs to add more space so that it will allow for growth. He emphasized the importance of proceeding with Phase 1.

The motion to include funding in the city's 2025-26 budget, to approve the new site design, to include the project in the 2025 state legislative advocacy priority projects, bringing the total cost for the monument to \$9.99 million, and to approve the grant extension and funding request passed unanimously.



J.K. YAMAMOTO / Rafu Shimpō

WWII Camp Wall board members at the April 22 Torrance City Council meeting (from left): Eric Hamada, Nancy Hayata, Brett Smith and Alvin Takamori.

just a static monument for those of Japanese ancestry, but that it is an important educational model for those of all ages and races.

He requested that the nonprofit be allowed a more active role in creating accurate historical content for the informational panels.

Community activists Kay Oda and Jenny Chomori also spoke to the inclusion of the names of Germans and Italians. Chomori stated, "We need to make sure that history is presented correctly. All names of those incarcerated should be included. People of all colors fought for redress."

Councilmember Asam Sheikh mentioned that he met with Sahara



Chee Salette

Rendering of the completed World War II Camp Wall at Columbia Park in Torrance.

LAist Senior Editor Kiriyaama Let Go Due to Budget Cuts

By J.K. YAMAMOTO
RAFU STAFF WRITER

George Kiriyaama, senior editor at LAist (formerly KPCC) in Pasadena, announced May 16 that he has been laid off.

"It is with great sadness that I am announcing my departure from the management team at LAist ...

Last week, LAist cut its staff by 5% because of ongoing budget strain and potential loss in federal funding," he posted on Facebook on May 16. "I was one of those let go."

Public radio and television stations across the country are facing the loss of federal funding under the Trump Administration.

Kiriyaama, who previously served as managing editor at KTVU in Oakland, KTNV in Las Vegas, NBC Bay Area in San Jose, and KCOY-KEYT-KKFX in Santa Maria, Santa Barbara and San Luis Obispo, joined LAist (89.3 FM) in October 2023. His last day was May 20.

His team of reporters: Josie

Huang (AAPI communities), Jacob Margolis (climate/environment/science) and Erin Stone (climate/environment).

"I was asked to take the lead on creating LAist coverage plans for the 2024 elections, 2024 Climate Solutions Week, 2024 Earth Day and last year's total solar eclipse," Kiriyaama



George Kiriyaama

said. "Three weeks after the wildfires in 2025, I was asked to take point on recovery/rebuild coverage plans for LAist."

The highlight of his time as senior editor: "Chatting live with longtime

'AirTalk' host Larry Mantle and retired 'All Things Considered' host Nick Roman about the Dodgers opening their season in Japan."

"I really enjoyed working with Josie Huang on AAPI communities stories," Kiriyaama added. "She did many stories on the Japanese American community during my time at LAist, including Suehiro Cafe shutting down its Little Tokyo location in late 2023.

"I was honored to work with such an amazing group of dedicated journalists who served our diverse communities with professionalism, empathy and respect. All of their stories have made Southern California a better place to live, work and play."

In a farewell note to his staff, Kiriyaama said, "Thank you. Two simple words. Two meaningful words. Words from my heart to all of you. Thank you for the opportunity to be part of this team. To be part of something special."

"Because that's what all of you

Please see Kiriyaama, page 4

Hannah Kobayashi Breaks Silence After Going 'Missing'

By MIKEY HIRANO CULROSS
RAFU STAFF WRITER

Some six months after her apparent disappearance sparked a nervous and unexpectedly tragic search across Los Angeles, Hannah Kobayashi has resurfaced to comment on the matter.

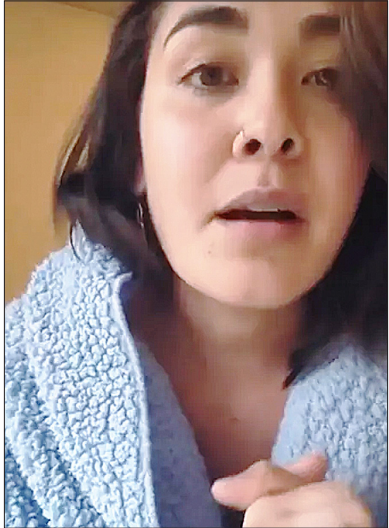
"I just want to come on here and take the time to say how grateful I am for everyone, every single person, who dedicated time and energy into looking for me," the 30-year-old from Hawaii said in a video she posted to social media on Monday.

"It means the world to me," she added.

Family, friends and scores of volunteers launched a frantic search in Southern California and across the nation last November after Kobayashi failed to make her connecting flight to New York after arriving at Los Angeles International Airport from Maui.

The efforts to find her took a heartbreaking turn on Nov. 24, when the woman's father, Ryan Kobayashi, was found dead of an apparent suicide near LAX.

The LAPD received reports of a body in the 6100 block of Century Boulevard about 4 a.m. The L.A. County Medical Examiner's Office later identified the person as the 58-year-old, who had traveled to L.A.



Hannah Kobayashi

to join the search for his daughter.

It was reported that Ryan Kobayashi jumped from a parking structure to his death.

The family confirmed his suicide in a statement, saying, "This loss has compounded the family's suffering immeasurably."

Hannah Kobayashi appeared to indirectly address the death of her father in her video message, delivering her comments in a halting, almost whispering voice.

Please see Kobayashi, page 4

Professor Returns to Teaching After Attack, Gains Support of Community Organizations

By J.K. YAMAMOTO
RAFU STAFF WRITER

Aki Maehara, the victim of an apparent hate-motivated attack, is still recovering but was planning this week to speak at a public event and has resumed teaching history at East Los Angeles College.

Meanwhile, a Go Fund Me page established on his behalf raised more than \$77,000 as of May 19.

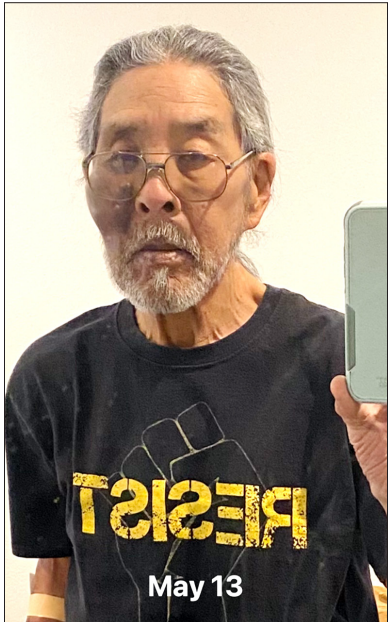
Gloria Cabrera, a friend of Maehara who organized the fundraising campaign, posted this week, "I am truly in awe of Prof. Aki Maehara, whose warrior spirit inspires him as he continues to speak out on the viciousness of the hate crime that attempted to unalive him on April 29, 2025. A suspected yt (white) supremacist drove his car into a 71-year-old Japanese American college prof on his electric bike.

"So far, he met with two officers (yt) who took the initial report and did not report information about the suspect, that included threats made against Prof. Maehara and other suspects. We are waiting for the preliminary report. It's priority to keep pressure on this investigation."

Maehara said, "I heard someone yell, 'F'g Chink!' as I got hit, then I heard, 'Go back to Chink-land.' As I laid on the ground, he drove away."

He was hospitalized with a concussion, cheek bone fracture, neck

Please see Maehara, page 4



Aki Maehara on the day he returned to teaching last week.

Groundbreaking for Satoru Tsuneishi Park in Monrovia

A groundbreaking for Satoru Tsuneishi Park, located at 1111 Encino Ave. in Monrovia, will be held on Tuesday, June 3, at 10 a.m.

Jonathan Tsuneishi, grandson of Satoru Tsuneishi (1888-1987), posted on Facebook: "Satoru Tsuneishi was the first Asian American to graduate from the Monrovia-Arcadia High School. He would spend most of his

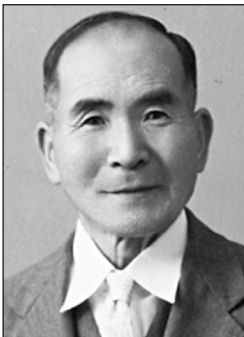
returned to Monrovia. He began to write poetry and started a haiku club. He would spend the rest of his life as a haiku poet, published in Japan and the U.S. under the pen name of Shisei.

"The City of Monrovia has created public parks named after Julius Parker, an African American, and Lucinda Garcia, a Latina, both longtime residents of the city. Roy Nakano, a resident of Monrovia, later commented that Satoru Tsuneishi, Lucinda Garcia and Julian Fisher were everyday people who made extraordinary contributions to building our community.

"Tina Cherry, representing the City of Monrovia, said in an article published in *The Rafu Shimpō* that she felt it important to share the story of Japanese Americans who lived in Monrovia and that their experience of being interned in WWII should not be forgotten.

"My brother Mark shared that the contributions made by early Japanese Americans help shape our communities and that it was important to create

Please see Tsuneishi Park, page 4



Satoru Tsuneishi

Valkyries Make WNBA History, but Not Without Controversy

By MIKEY HIRANO CULROSS
RAFU SPORTS EDITOR

The Golden State Valkyries made their WNBA debut on May 16, an occasion marked by a sellout crowd, a series of league firsts and even a lingering controversy.

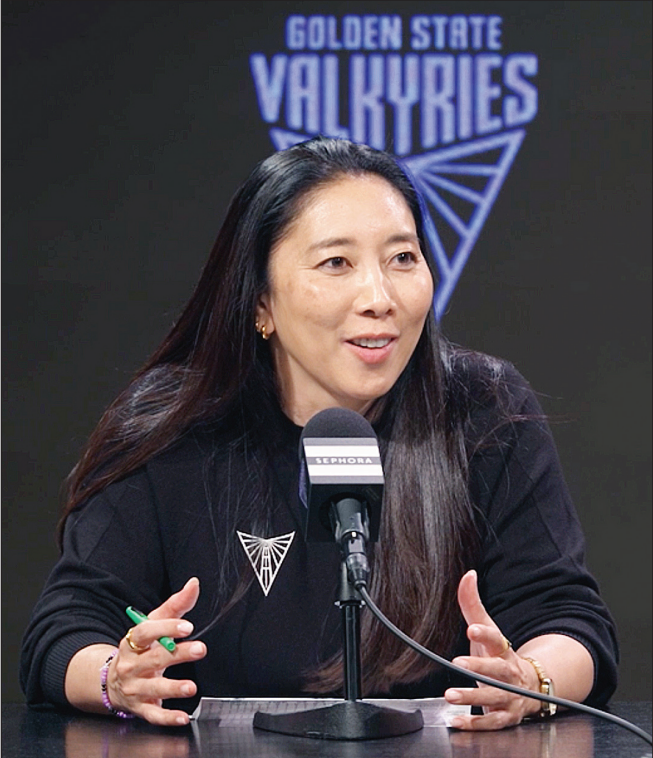
More than 18,000 packed the Chase Center in San Francisco to see the league’s newest team play their first game. It is said to be the highest attendance ever for a WNBA home opener.

Asked to describe the environment, Valkyries head coach Natalie Nakase had a single-word response at the ready: loud.

“That’s exactly what I wanted,” Nakase said during a postgame press conference. “If I could have dreamed of an environment – the roars, the screams, the shouts... that crowd, they’re going to support us regardless. To have that kind of support, it’s surreal.”

Turnovers in particular spoiled the debut, however, as Golden State fell to the visiting L.A. Sparks, 82-67.

“It’s hard to win a game that way,” said Nakase. “I have to give them a little grace, with the kind of environment we had,” she added, referencing



Golden State Valkyries head coach Natalie Nakase speaks to reporters after her team’s inagural WBNA game on May 16 in San Francisco.

the large crowd and the fact that for several of her players, it was a new experience to start and have heavy playing time.

“We’ll clean it up, take a look at it, but I know there’s a lot of room for improvement,” she said. “Their effort was there and I’m never going to get upset with that.”

Nakase also admitted to having a bit of an emotional moment when she spotted Doc Rivers, who had mentored her as an assistant when he was the head coach of the L.A. Clippers.

“Obviously I was a little choked up. He doesn’t live out here, so for him to fly here to support me, that warmed my heart for sure,” she said.

The Valkyries’ debut was not without controversy, however, as a painful decision was made in the days before they took the court.

After selecting University of Connecticut guard Kaitlyn Chen in the WNBA draft on April 15, Golden State left her off the roster in its final round of preseason cuts.

For many fans, it was a stunning move, as Chen was fresh off a NCAA national championship with UConn and was poised to be the first Taiwanese player in the WNBA, playing for Nakase, the league’s first Asian American head coach.

Reaction was swift from players and supporters from across the country.

Phoenix Mercury forward and WNBA All-Star Satou Sabally called the optics of the decision “tough.”

“Even though she got the exposure she deserved, the question is whether the team truly invested in her future,” Sabally said in a social media post.

Much of the criticism of the move stemmed from how aggressively the league promoted Chen during the preseason, fervently marketing her jersey for sale. Chen’s gear is said to have been one of the top sellers, with orders outpacing even that of WBNA stars like Sabrina Ionescu.

The notion that the league took advantage of Chen’s marketability without regard for her future development or inclusion has not sat well with many fans.

Chen made her mark on history by playing in an official preseason game on May 6, regarded by many supporters as an important milestone for Asian American representation in pro sports.

Fans took to social media after the cut was announced, voicing overwhelming support for Chen, who stands a solid chance of landing with another team.

“The bay loves you. So proud. The Valkyries failed in this,” one fan wrote.

Yamamoto Takes No-hitter to 7th in Dodgers’ Walk-off Win

Yoshinobu Yamamoto took his no-hit bid to the seventh inning but did not get a decision Tuesday in the Dodgers’ 4-3 walk-off win in 10 innings against the Arizona Diamondbacks.

A commanding Yamamoto tossed five 1-2-3 innings before Ketel Marte, who drew a walk in the fourth, singled to open the seventh to end the right-hander’s bid at Dodger Stadium.

A wild pitch and a two-out walk put runners on the corners, but Yamamoto got out of the jam with his ninth and last strikeout of the game against Pavin Smith, preserving his team’s 1-0 lead.

Gabriel Moreno tied the game for the D-backs with a solo shot with one out in the ninth, however, and they then led 3-1 in the 10th thanks to Corbin Carroll’s two-run home run.

But the Dodgers rallied for three runs in the home half when Shohei Ohtani drew an intentional walk, stole second and scored the winning run on Max Muncy’s sacrifice fly, ending their four-game losing skid.

“I rolled my sleeves up each inning and put in a proper effort,” Yamamoto, who remains 5-3 for the season, said after his 110-pitch outing. “I feel really happy to have contributed to the win.”

Seiya Suzuki hit his 12th homer while going 3-for-5 as the Chicago Cubs clobbered the Miami Marlins 14-1, with the outfielder now in joint Major League Baseball lead with 43 RBIs, alongside the New York Yankees’ Aaron Judge, after plating four in the game.

Suzuki had an infield single in the third before slugging a two-run shot to center off Lake Bachar to wrap up



JUN NAGATA / Rafu Shimpō

Yoshinobu Yamamoto reacts after ending the top of the sixth inning with a strikeout on Tuesday. Yamamoto took a no-hitter into the seventh inning and allowed only one hit in his start.

the Cubs’ eight-run sixth with a 9-1 lead. He also had a two-run double in the five-run ninth.

“I was determined to swing aggressively,” Suzuki said of his home run. “It felt great to ride the momentum my teammates built. I usually

remember something about pitchers I’ve faced before, even if it’s just once, and that includes relievers.”

On Monday, Ohtani hit his MLB-leading 17th home run of the season in the Dodgers’ 9-5 loss to Arizona.

—Kyodo News reports

ON STAGE

Ensemble Tenshi Kicks Off 2025 Season June 8 with Kohei Tsuka’s ‘Prostitute Investigator’

Ensemble Tenshi, a production company that previously produced the award-winning epic period play “Shizuka - 静” (Broadway World Regional Award, Los Angeles) and “Castles in the Crimson Flame,” delivers “Prostitute Investigator” by legendary Japanese playwright Kohei Tsuka at The Broadwater Second Stage in Hollywood beginning June 8.

Female chief detective Denbei Kimura at the Tokyo Metropolitan Police Department is notorious for her fearlessness. She will do anything to get justice served even if it means losing the love of her life. Denbei’s loyal subordinate, Sadayuki Toda, has yet to find the courage to go back his home in a small village to confide to his parents that he is gay.

Denbei and Toda are assigned to solve the murder case committed by Kintaro Oyama, who killed his childhood girlfriend, Aiko Yamaguchi, from a distant southern island called Goto. Just before the murder, the pride of Goto Islands, Daizen Lee, took his own life.

Detective Tomekichi Kumada is transferred to Denbei’s investigation room. The two were lovers in the past. Kumada is desperately trying to protect the mystery of the murder. Behind the murder lies the secret of the small Islands. Denbei is determined to make Oyama a “first-class criminal” whatever it takes.

Tomoko Karina (“Captain America,” “Cobra Kai”) will play the dynamic role of Denbei. She also directs the play with L.A. theatre favorite Carla Valentine (“Lady Bird,” “S.W.A.T.”) and Dan Pousson as artistic supervisors. They have adapted this popular Japanese play to cater to English-speaking audiences.

The cast also includes Christian Lowery, Thomas McKean, and Quinn Vu.

Showtimes: Sunday, June 8, at 5 p.m.; Saturday, June 14, at 6:30 p.m.; Saturday, June 21, at 5 p.m. The Broadwater Second Stage is located at 6320 Santa Monica Blvd., Los Angeles. Tickets are \$25. Purchase at www.hollywoodfringe.org/projects/12122.

For more information, email info@ensemblenshi.org or visit <https://ensemblenshi.org/>.

About the Playwright

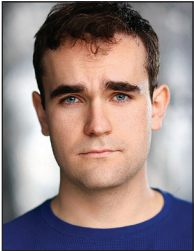
Kohei Tsuka (1948-2010), a Korean Japanese playwright, theater director, novelist and screenwriter, was one of Japan’s most influential theater figures and has had a major impact on modern theatre since the 1970s. His plays have gained overwhelming popularity, sparking a “Tsuka boom.”

At the age of 25, he was the youngest person ever to win the Kishida Kunio Drama Award (for “Atami Murder Case”). He was also a Naoki Literary Prize laureate and winner of Japan Academy Award for best screenplay (for “Fall Guy”) and the Yomiuri Literature Prize for the play “Hiryuden ‘90: Autumn of Slaughter”).

With his poisonously aggressive dialogues and passionate, fast-paced style, he uncovered the emotions swirling within people in weaker positions. Even now, more than a decade after his death, Tsuka’s works are performed every year all over Japan, attracting many actors and audiences.



Tomoko Karina



Thomas McKean

EVENTS

Sushi & Sake for Wildfire Relief Set for June 9 at Japan House Los Angeles

The Japanese Restaurant Association of America presents a charity event, “Sushi & Sake for Wildfire Relief,” on Monday, June 9, from 5 to 8 p.m. at Japan House Los Angeles, 5801 Hollywood Blvd.

This special evening will bring together leading Japanese restaurants, food manufacturers, and importers from across Southern California to support victims of the January wildfires in the Los Angeles area. It is a celebration of culinary community and compassion.

Attendees will enjoy authentic Japanese food and premium sake in a warm, communal atmosphere — all while contributing to meaningful local recovery efforts.

Hosted by JRA, with the support of JETRO Los Angeles, Japan House Los Angeles, and the Consulate General of Japan in Los Angeles, this event highlights the generosity and unity of the Japanese food industry in Los Angeles.

The event will feature:

- All-you-can-eat sushi and giant sashimi boat with fresh, beautifully crafted seafood
- Premium sake tasting – a curated selection of fine Japanese sake
- Japanese food booths and souvenirs – Enjoy signature dishes from popular local Japanese restaurants.

Plus, take home a special gift to remember the experience.

Capacity is limited to 100 guests. Tickets are \$100 per person and are available at: www.eventbrite.com.

Music and Culture at the Marina



The Marina Culture Jam, a celebration of Marina Del Rey’s 60th anniversary, will be held on Saturday, May 31, from 11 a.m. to 4 p.m. at Burton Chace Park, 13650 Mindanao Way in Marina Del Rey. TaikoProject is scheduled to perform from 11 to 11:45 a.m. The event will also feature Inca (Peruvian ensemble), free giveaways, photo booth, cultural art activities, kids’ craft corner, lawn games, food trucks, resource fair and historic harbor tours. Free admission. Info: (424) 526-7900, events@bh.lacounty.gov

2025 MARINA CULTURE JAM

SATURDAY, MAY 31, 2025

11 AM - 4 PM

BURTON CHACE PARK
13650 MINDANAO WAY
MARINA DEL REY, CA 90292

Join us for a special Marina Culture Jam event to celebrate the 60th anniversary of Marina del Rey!

EVENT SCHEDULE:

- 11:00 AM - 11:45 AM TAIKOPROJECT PERFORMANCE
- 11:00 AM - 4:00 PM RESOURCE FAIR
- 12:00 PM - 12:45 PM DRUM SESSION #1
- 12:00 PM - 2:00 PM DJ
- 1:00 PM - 1:45 PM DRUM SESSION #2
- 3:00 PM - 3:45 PM INCA, THE PERUVIAN ENSEMBLE PERFORMANCE

ACTIVITIES INCLUDE:

- FREE GIVEAWAYS
- PHOTO BOOTH FUN
- CULTURAL ART ACTIVITIES
- KIDS CRAFT CORNER
- LAWN GAMES
- FOOD TRUCKS
- HISTORIC HARBOR TOURS

PLUS! Enjoy the Marina del Rey WaterBus for the most scenic way to get around the Marina for only \$1 per person, per destination

FOR MORE INFORMATION:
BEACHES.LACOUNTY.GOV

CONNECT WITH US!

@LACDBH

Unlocking *the* FUTURE

2025 Annual Benefit & Online Auction

— Saturday, April 12, 2025 —

Thank you to our sponsors and guests for their generous support in making our 2025 Benefit and Online Auction a success! Our Benefit raised over \$1.2 million to support JANM’s mission and educational programs.

Signature Sponsors

Lexus
MUFG Bank, Ltd.

Terasaki Nibei Foundation
U.S. Bank

Diamond Sponsors

ABC Stores
Kari Nakama and Kristine Nishiyama in partnership
with Capital Group
American Honda Motor Co.

The Picerne Family Foundation
Sugimoto Family Foundation (George, Lisa, Nathan)
Sycamore Tree Capital Partners
The Takeo & Miyoko Yuki Family

Emerald Sponsors

Bank of America
Kathryn Bannai / Gordon Yamate & Deborah Shiba
Bill Fujioka & Darlene Kuba
JANM Volunteers
Edward & Phoebe Morimoto

ORIX Corporation USA / Stan & Teri Koyanagi /
David & Tina Nishida
Jay Shiba
USC Nikkei Student Union

Platinum Sponsors

American Airlines
Vicki Ariyasu / Jennifer Hirano
COOLEY LLP / Koji & Angela Fukumura
Disney
Bob & Carolyn Fujioka
Bryan & Betty Fujita
The Gonsaku & Mine Ito Family

King’s Hawaiian
Nikki Kodama & Family
Mitsubishi Corporation (Americas)
Susan Morita & Alan Matsumoto
Port of Los Angeles
George & Brad Takei

Gold Sponsors

Aquamar
Arizona State University
Julie Azuma / Stan Honda
Daniel K. Inouye Institute
East West Bank
Leslie Furukawa & John Hayashi
Gumshoe Ventures / Okabayashi
Ken & Jo Ann Hamamura
Frank & Betty Hiji
HOK
ITO EN (North America) Inc.
The J. Morey Company, An Ori-gen Family Company
John O. Johnson & Kelli-Ann Nakayama
Kintetsu Enterprises Company of America
Kintetsu World Express (U.S.A.), Inc.
John & Sarah Kobara Family Foundation

Kondo Wealth Advisors
Landmark PM
Remembering Reiso & Shizuka Miyamoto
NakatomiPR
Dr. Richard & Virginia Okumoto
Port of Long Beach
Wendy Shiba & Lawrence Pittman
Floyd & Ruth Shimomura
Cheryl Shojinaga & John Fukunaga
Spearman Foundation / Alma Banuelos, Board Director
Sumitomo Corporation of Americas
Tony Hawaii Automotive Group
Winchell’s & Yum Yum Donuts
Yamagata Foundation
In Memory of Frank & Helen Yamakoshi

Community Sponsors

Go For Broke National Education Center
Grant Imahara STEAM Foundation
Great Leap, Inc.

Japanese American Cultural & Community Center (JACCC)
Little Tokyo Service Center

Bid for Education Leaders

ABC Stores
Kansas Marine, Inc. / The Doizaki Family
Nakahira Family Trust
Rod & Elsie Nakamoto

Wendy Shiba & Lawrence Pittman
Lucille Tayama
Guy & Audrey Watanabe

Exclusive Local Television Media Partner: KTLA 5

Media Sponsor: *The Rafu Shimpō*

**as of 4/11/2025*

Photos (top to bottom): Ann Burroughs presents Toshizo Watanabe with JANM’s Lifetime Achievement Award; The Nisei Week queen and court with George and Brad Takei; Nobuko Miyamoto, recipient of JANM’s Lifetime Achievement Award; Tad Nakamura presents Judi Oyama with JANM’s Award of Excellence; Yosh Nakamura with David Ono and Tamlyn Tomita; Judith Hill, singer-songwriter and multi -instrumentalist

100 N. Central Avenue, Los Angeles, CA 90012 | 213.625.0414
janm.org | @jamuseum | janmstore.com | @janmstore | DiscoverNikkei.org

     **janm**  JAPANESE AMERICAN NATIONAL MUSEUM



2025 Lexus Opportunity Drawing



Congratulations to Rick Kaz Noguchi from Culver City, CA, the winner of the Lexus TX 500h F SPORT Performance!

Thank you to everyone who purchased tickets and added to the success of our event.

Proudly sponsored by


**Ja
nm**
Benefit &
Online Auction



CLASSIFIEDS

THE RAFU SHIMPO

Pub# 454-140

Copyright 2025 by Los Angeles News Publishing Company, published once a week by Michael Komai, publisher. Known office of publication: 701 E. Third St. Ste #130, Los Angeles, CA 90013-1789. Business and Editorial Office: 701 E. Third St. Ste #130, Los Angeles, CA 90013-1789. Accounting and Circulation Offices: Michael Komai, Publisher, 701 E. Third St. Ste #130, Los Angeles, CA 90013-1789. POSTMASTER: Send address changes to The Rafu Shimpo, 701 E. Third St. Ste #130, Los Angeles, CA 90013-1789.

For information on how to place an English section Classified Ad in The Rafu Shimpo, please call (213) 629-2231, ext. #100 or fax (213) 687-0737, Monday through Friday, 8 a.m.-4:30 p.m. Deadline is 11 a.m. two days in advance of publication date. Ads must be pre-paid by cash, check or credit card (American Express, Mastercard, and Visa). Include your name and a daytime phone number. In compliance with federal equal employment opportunity, some ads under "Help Wanted" may designate "man or woman," although the use of such terms does not mean jobs are limited to male or female applicants.

LEGAL NOTICES

FICTITIOUS BUSINESS NAMES

FICTITIOUS BUSINESS NAME STATEMENT 2025078811

The following person(s) is (are) doing business as:

1. **HIGH IMPACT GAMES**
828 S LAKE ST
LOS ANGELES CA 90057
LOS ANGELES COUNTY

Articles of Incorporation or Organization Number: AI #0N

REGISTERED OWNERS:
1. **ATSUKO KUBOTA**
828 S LAKE ST
LOS ANGELES CA 90057

This business is being conducted by: **an Individual**. The date registrant commenced to transact business under the fictitious business name or names listed above on 06/2004. I declare that all information in this statement is true and correct.

Signed:
ATSUKO KUBOTA, OWNER
This statement was filed with the County Clerk of Los Angeles on **APRIL 17, 2025**.

NOTICE—In accordance with subdivision (a) of Section 17920, a Fictitious Name Statement generally expires at the end of five years from the date on which it was filed in the Office of the County Clerk, except, as provided in Subdivision (b) of Section 17920, where it expires 40 days after any change in the facts set forth in the statement pursuant to Section 17913 other than a change in the residence address of a registered owner. A new Fictitious Business Name Statement must be filed before the expiration. Effective January 1, 2014, the Fictitious Business Name Statement must be accompanied by the Affidavit of Identity Form. The filing of this statement does not of itself authorize the use in this state of a Fictitious Business Name in violation of the rights of another under federal, state, or common law (See Section 14411 et seq., Business and Professions Code). I hereby certify that this copy is a correct copy of the original statement on file in my office. DEAN C. LOGAN, Los Angeles County Clerk.

Published: 5/2/25, 5/9/25, 5/16/25, 5/23/25.

Kiriyama

Continued from page 1

are. Special. Talented as hell. And all of you CARE. You do what you do because you care for this community and the people who live here.

“One of the best group of journalists I have ever worked with — and I have worked in many newsrooms over the past 32 years! Your dedication to journalism and quality storytelling are top-notch and unmatched ...

“As I embark on the next chapter of my life and career, I walk with confidence and hope — ready to tackle any challenge, overcome any adversity and to keep moving forward no matter what it takes.

See you at the top!”

SENIOR HOME CARE SERVICES

Holly Services provides excellent caregiving services to Los Angeles, OC, SD, HI, and Japan. From 4 to 24 hours Rates start at \$29/hr Call 626-333-6767 All the staff employed Bonded & business/workers' comp insured License #194700619

Hope International Homecare, Inc.

Japanese bilingual caregivers can cook, clean, provide personal care with all your home care needs.

- Part time to 24 hr care
- Companion care to Hospice Care

We cover WLA, East L.A., Monterey Park, Orange County, San Fernando Valley, San Bernardino and Long Beach.

(310) 782-7979
www.hi-homecare.com

BEST CARE CONNECTIONS IN-HOME CARE SERVICES

JAPANESE CAREGIVER SERVICES
info@bcc-la.com
www.bcc-la.com
CALIFORNIA STATE LICENSE: HCO#194700410
1-888-610-1160 (ENGLISH/JAPANESE)

SENIOR HOME CARE SERVICES

JAPANESE HOME CARE
Japanese Caregivers available to cook, clean, drive, etc. We specialize in home exercise for Parkinson's Disease, Stroke & more. Doctor of Physical Therapy on staff.
CARELIFE (310) 373-6030
www.carelifeinc.com
Bonded & Insured

KAZOKU HOME 家族ホーム

We're a newly opened Residential Care Facility for elderly in Los Angeles area.

Please contact us if you're looking for places for your loved ones.

We also have a facility in Kyoto Japan if you're interested.

www.kazokuhomela.com
424-237-4914

BUSINESS SERVICES

Painting & carpenter jobs. Painter from Japan License #764218 Oku Painting T(310) 490-9121

SERVICES

ABC ROOFING—Since 1979. Free estimate, reasonable price. Guarantee. Lic #425672 (213) 380-9073

Japanese Tree Trimming Over 25 years experience pruning matsu, juniper, maple, kaki while dormant, and other artistic trees. Serving all of Southern California. Cal State Long Beach grad.
TAKASHI TASH KUSHI (714) 821-4808
Leave message anytime or call after 6 p.m. Japanese is OK

TLC Renovation, Inc. Carpentry, plumbing, electrical & much more. Big or small jobs welcomed. 25 years experience.
Licensed General Contractor #538475
Bob Tanabe (818) 352-2233

FOR RENT

BEAUTIFUL 2 BEDROOM, 2 BATH CONDO - Harbor City \$3,000/mo + deposit
Includes washer, dryer, refrigerator, and stove. 1 parking stall with covered garage. Close to freeways, shopping malls and restaurants. Small pet allowed with extra deposit.
Contact 310.754-0581

HOME FOR RENT

11191 Tarawa Drive, Los Alamitos, CA 90275 Fully remodeled 4 bedroom. 2 full baths, 1520 sq ft, original refinished hardwood floors, corner location, large backyard. Gardening and lawn care is paid by owner. Rent - \$4250 per month, need 1 year lease minimum.
(714) 390-4547

RENTAL Room

ROOM FOR RENT
Huntington Park - 4 miles south from Little Tokyo. 323-236-5161

PETS

DAY CARE AND OVERNIGHT BOARDING SERVICES For small dogs. *Guardería de perros pequeños y servicio de hotel.* Santa Fe Ave & Slauson Ave area. Huntington Park CALL US NOW !!! (323) 236-5161

LEGAL NOTICE

SOUTHERN CALIFORNIA REGIONAL RAIL AUTHORITY

IFB No. M2513450
Precast Wall Panels and Steel Pilasters

SCRRA is seeking bids for precast wall panels and steel pilasters. Bid documents may be obtained at <https://metrolinktrains.com/doing-business> (free registration). Electronic Bids are due by 2:00PM (PST) on June 23, 2025.

For further information, contact Sharon Williams, Sr. Contract Administrator at (213) 452-0302 or williamsS@scrra.net.

5/23/25
CNS-3928399#
RAFU SHIMPO

Read The Rafu Online!



www.rafu.com



eric akutagawa
a name you know and trust
Ask Me About
Compass Concierge!
310.890.1118
REALTOR | DRE 0142357
COMPASS

FULL SERVICE
HOME CARE
JAPANESE CAREGIVERS
PACECARE
(213) 725-2273
WWW.PACECARELA.COM
CALIFORNIA LICENSE #: 194700154

FD #808
FUKUI
IS
UNDERSTANDING
SINCE 1918
FUKUI MORTUARY
707 E. Temple Street
Los Angeles, CA 90012
213-626-0441

LIFE'S JOURNEY DOES NOT END
Green Hills Mortuary helps families honor life through celebration and remembrance.
• Serving families of all faiths, with special requests, and budgets
• Free advanced funeral planning
GREEN HILLS MORTUARY and memorial chapel, Inc.
Lic.# FD1175; CA Insurance # 0737077
Rancho Palos Verdes, CA 90275 (310) 831-0311 | GreenHillsMortuary.com

Kobayashi

Continued from page 1

“Every day is such a gift, after such loss and pain and suffering,” she said. “We should all learn to be kind to one another.”

According to her family, Kobayashi was traveling to New York to visit family when she landed at LAX last Nov. 8, but did not board her connecting flight, and she apparently spent the night at LAX.

She traveled the next day to The Grove shopping center and returned to LAX that night, according to the family. She was spotted back at The Grove on Nov. 10 and likely returned to LAX again.

She was seen around 5 p.m. on Nov. 11 speaking to a ticketing agent at LAX, but she did not board a flight, according to the family, instead boarding an eastbound Metro C Line train at the Century/Aviation Station the night of Nov. 11, then transferring to a northbound A Line train at the Rosa Parks Station, accompanied by an “unknown individual.”

The family says she was spotted early the next morning, Nov. 12, at the Union Station bus terminal in Downtown Los Angeles.

The family said earlier the last communications they received from Kobayashi were in strange text messages, including one in which she said she was feeling scared, and that someone might be trying to steal her

Maehara

Continued from page 1

injury, swelling and bruising from his face to his upper chest, bruised ribs, hips, thigh and ankle, with one elbow torn open.

“I had tensions from a former housemate who had ties to white supremacist groups and had received threats from an individual in these hate groups,” he added.

Maehara said that teaching about the history of racism in America has made him the target of protests at East L.A. College and Cal State Long Beach. Because he was wearing a helmet with a visor at the time of the attack, which would have made

KUBOTA
Sharing. Community. Legacy.
kubotamortuary.com
Serving the community over 70 years.
911 Venice Blvd
Los Angeles, CA 90015
T: 213-749-1449
F: 213-749-0265
FD-929

OYAMA PLUMBING
PAUL MIDDO
LICENSE # 758457
(323) 313-5392
RESIDENTIAL REPAIRS-REMODELING-REPIPING INSURED

YAMAGUCHI
TERMITE CONTROL SERVICE
INSPECTION and ESTIMATES
TERMITE REPORTS and ESCROW
(323) 663-1161
STATE LICENSE NO. 6377

Get Your Inheritance Fast!
Up to 90% OFF
Probate Fees
800-403-6078

Es
Judd Matsunaga
ELDER LAW SERVICES OF CALIFORNIA
A Professional Law Corporation
Call to see if you qualify Today!
Judd Matsunaga
Attorney at Law
elderlawcalifornia.com

John Saga
Electrical & Plumbing
Lic. #B502655 C10 C36
Specializing in:
Solar/Bath & Kitchen Remodel/
Electrical Panel Upgrade
Tank-less Water Heater-Re-Pipe-Repairs & More
310-377-2077

Karl Kim, CFP®, CRTP
Retirement Planning Advisors, Inc.
Retirement Income, Estate Planning,
Tax Planning, Investments
www.RetirementPlanningAdvisors.com
714-994-0599
Securities and Investment Advisory Services offered through
Brokers International Financial Services, LLC. Member SIPC. Brokers
International Financial Services, LLC is not an affiliated company.
Karl Kim, Investment Advisor Representative.
CA Insurance License #0810324



MIKEY HIRANO CULROSS / Rafu Shimpo

A flier asking for information about Hannah Kobayashi is seen at the Metro Pico station last November. Volunteers posted signs and handed out leaflets across Los Angeles after the Hawaii resident failed to catch a connecting flight to New York and could not be contacted.

money and identity.

On Dec. 2, the LAPD announced that Kobayashi was seen on video crossing the border into Mexico — apparently of her own volition — and there were no signs of foul play. She was classified as a “voluntary missing person.”

About a week later, Kobayashi's family said she had contacted them and gave assurances that she was safe. Her attorney said she returned to the U.S. from Mexico on Dec. 15, and the LAPD closed their investigation into the matter.

Kobayashi had since made few if any comments on the matter, posting little on social media until two weeks ago, when she added a monochrome photo of herself dwarfed by giant sequoia trees.

“For all that I have yet to say, the love in my heart remains the same, for every being that exists and those to come...” she wrote.

Comments on the posts ran the gamut, from well wishes like “Welcome back!” to harsh quips, including questioning why she did not attend her father's funeral.

it impossible for the driver to identify him as Asian, he said that the circumstances were “suspicious.”

“The head injuries I sustained worsened my gum disease condition, loosening several teeth,” Maehara told *The Rafu Shimpo* on May 19. “I will need to get upper and lower implant arches.”

Regarding the Montebello Police Department, he said, “The investigation is complicated because there may be MAGA KKK officer problem at MPD. Also I know it would have to be conducted on a multiple jurisdiction basis involving more than one police department. This complicates its objectivity and security.”

The MPD, which is investigating the case as a possible hate crime and attempted vehicular homicide, told *The Los Angeles Times* that they have contacted residents in the neighborhood but have been unable to find security camera footage of the incident.

A Change.org petition is demanding that the MPD and Los Angeles County Sheriff's Department fully investigate the case, that that federal authorities be brought in if there is evidence of white supremacist involvement, and that public officials “condemn this attack and commit to protecting our educators and elders from hate-fueled violence.”

Maehara was scheduled to speak on May 22 at the Chinese American Museum in Los Angeles with the support of Asian Americans Advancing Justice-Southern California, Greater L.A. JACL, Save Our Seniors Network, Anti-Asian Hate Crimes Coalition, Alliance for Asian American Justice, and other organizations.

Maehara also decided to return to the classroom on May 13, wearing a T-shirt with a simple message: “RESIST.”

“There are four weeks left in this semester,” he said. “I will not abandon my students. I will not let a white racist stop me from educating them.

“My message tonight to my students (in symbolic act and lecture), is that the struggle for our freedom and liberation are intergenerational, a lifetime struggle (Angela Y. Davis) that evolves with each new generation: assess, adjust, build bridges and community coalitions, and act to achieve justice for all.”

In a statement, Executive Director Hussam Ayloush of the Greater Los Angeles Area office of the Council on American-Islamic Relations (CAIR-LA), said, “We are deeply troubled by this vicious assault allegedly targeting Mr. Maehara. This incident is reflective of the hate and bigotry that is on the rise nationwide and demonstrates the important work of educators, such as Mr. Maehara, who teach about the history and implications of racism in America.

“We commend the Montebello Police Department for its prompt action in investigating this crime and the seriousness it deserves. We look forward to seeing the perpetrator held accountable for this hateful act.”

Complete Fishing Tackle
626-797-8839
John's SPORT SHOP
PASADENA
1402 Lincoln Ave. Pasadena CA 91103



IT PAYS TO KNOW By Judd Matsunaga, Esq.

What Is Poverty Level???

In America, the strongest and richest nation in the world, you'd think that everyone would have sufficient resources to pay for food and medicine, be able keep a roof over their heads, and meet their other basic needs. You would think that everyone, regardless of their race, color, age, or national origin, deserves quality health care.

However, the sad truth is that 45% of Americans over 65 have trouble meeting their basic needs — that's nearly half of older adults. (Source: www.justiceinaging.org)

Since its inception in 1935, Social Security payments have been instrumental in providing economic security for older adults in the U.S. Additionally, Medicare, which provides health insurance to 66 million people age 65 or older, offers financial protection by helping to cover the cost of medical care, while Medicaid (California's Medi-Cal) provides additional benefits and cost-sharing assistance to many Medicare beneficiaries with low incomes.

Social Security is called a "cornerstone" of the U.S. social safety net, providing a crucial source of income for millions of Americans. Unfortunately, the "safety net" is full of holes. Over 1 in 10 (10.2%) adults ages 65 and older were living in poverty in 2022, i.e., household income below \$14,040 in 2022. In 2025, the poverty level for a single individual is \$15,650 annually. For a family of two, it's \$21,150. (Source: www.kff.org, Kaiser Family Foundation, May 21, 2024)

The average Social Security benefit is around \$1,900 per month, but millions of retired workers and their spouses receive much less than that. Because of lower wages earned during working years, the poverty rate was higher among people ages 80 and older, women, and people of color. For example, based on the official poverty measure, the share of older Black (17.3%), Hispanic (17.4%) and American Indian or Alaska Native (17.4%) adults with incomes below poverty was more than double the share of older white adults (7.7%).

In 2025, the cost-of-living adjustment (COLA) for Social Security benefits was only 2.5%, despite rising prices just about everywhere. This means that Social Security benefits, including Supplemental Security Income (SSI), will increase by 2.5% starting with payments made in January 2025. This increase translates to an average monthly increase of about \$50 for retirement benefits, according to an AARP article.

But COLA adjustments are completely out of touch with the "real world." The real cost food, gas, health-

care, living expenses, etc. are increasing by far more than COLA's 2.5% increase in 2025. Furthermore, because Part B premiums (up 5.9%) are commonly deducted from Social Security checks, that discrepancy can lead to beneficiaries seeing smaller monthly checks even after cost-of-living increases. If you're a senior living on Social Security, you might also be "feeling the pinch."

To make things worse, California is facing a \$12 billion budget deficit. On May 14, Gov. Gavin Newsom outlined his nearly \$322 billion state spending plan for the upcoming fiscal year. Newsom wants to help close the deficit by freezing enrollment in state-funded health care programs for the disabled, poor, and elderly, targeting primarily Medi-Cal and In-Home Support Services. A final budget must be signed by June.

The governor proposes the reinstatement of the Medi-Cal asset limit for disabled adults and seniors of \$2,000 for an individual or \$3,000 for a couple, a restriction that effectively demands extreme poverty in order to continue receiving critical health care.

These policies, if enacted, will slash hundreds of billions in Medicaid funding and undermine Medicare and the Affordable Care Act (ACA). As a result, at least 13.7 million people, including older adults, could have their health and long-term care coverage stripped away.

On a positive note, there are still many steps in the process before this bill becomes law. For those who can see the "writing on the wall," NOW is the time get a Medi-Cal card!!! Why?

Under the existing law, it's fairly easy to qualify for Medi-Cal since they removed the Asset Test on Jan. 1, 2024. You can keep your home and savings and still get a Medi-Cal card before they make it almost impossible to qualify.

"Say, Judd, just how likely is it that the law is changed denying Medi-Cal benefits to seniors and disabled adults?" Very likely. With the coming "tsunami" of baby boomers reaching nursing home age (average: 81 years old) in the coming years, the government can't afford to keep paying for long-term care. So they plan to shift the financial burden of long-term care off the "public sector" and place the cost on the "private sector." In the not too distant future, workers will be forced to purchase long-term care insurance.

California lawmakers and government think tanks have a plan to elimi-

nate Medi-Cal. "If that's so," you might ask, "why did California's Medi-Cal eliminate the Asset Test on Jan. 1 of 2024? Why are millionaires allowed to get Medi-Cal benefits? It makes no sense." Here's my explanation — soon and very soon, they'll announce that Medi-Cal is out of money to pay for long-term care.

They'll blame it on the millionaires who took advantage of the "no asset test" law and took benefits that they didn't really need. Without Medi-Cal (Medicaid), Americans will be forced to buy long-term care insurance. And if you don't buy LTC insurance privately on your own, you'll get state-sponsored insurance. And just like Social Security, the premiums will be deducted from your paycheck.

Here's my point — "when life gives you lemons, make lemonade." If you're retired and living off Social



Security, qualify for a Medi-Cal card NOW. Even if you're still healthy and independent, all seniors should consider getting a Medi-Cal card while they're still available. It's like having long-term care insurance without having to pay the expensive premiums. And, you don't need to pass a physical exam.

Under current California law, you may qualify for Medi-Cal even if you have a million dollars in the bank and own your home (still exempt), even if you don't need help or assistance at this time. You don't lose your Medicare by qualifying for Medi-Cal, i.e., you keep the same doctors and become "Medi-Medi."

Furthermore, no more "out-of-pocket" doctor co-pays, or prescription medication costs. If the government eliminates Medi-Cal benefits in the future, there's a good chance you'll be "grandfathered" in.

If you have a loved one currently in a nursing home and privately paying \$10,000 or more per month — STOP! Get Medi-Cal to pay the high cost of long-term care. But in order for Medi-Cal to pay, you have to be in a licensed Medi-Cal facility, e.g., Kei-Ai (the old Keiro), Hollenbeck, Atherton, etc. are all licensed Medi-Cal facilities.

However, Medi-Cal will not pay for retirement homes, board and care, or assisted living (unless they accept the Assisted Living Waiver (ALW) program).

If you have an elderly parent still at home, you might say, "Mom doesn't want to go to a nursing home." I don't blame her. But chances are, as she grows older, she's depending on her adult children to help her more and more, e.g., drive to the doctor, pay the bills, etc. More often than not, the adult care-giving child is helping mom out UNPAID.

Why not get money from In-Home-Supportive-Services (IHSS) so that Mom can continue to live in her own home?

IHSS is a county program designed to allow you to live safely in your own home and avoid the need for out-of-home care, i.e., nursing homes. Services almost always need to be provided in your own home, or the home of a relative. Here's the good part — you can elect to have them pay a family member, e.g., your daughter, for helping you live at home.

That's right! IHSS will pay adult children to help Mom with housework, meal preparation, and personal care, etc.

To be eligible for IHSS, a person must be enrolled in Medi-Cal. Since the current law makes it easy to qualify Mom for Medi-Cal, the trick now is getting the most money from IHSS.

IHSS will not pay for 24/7 home care. It's designed to help pay for part-time home care. IHSS will send a county social worker out to the house to determine the applicant's "level of ability and dependence upon verbal or physical assistance by another."

The assessment will evaluate the applicant's physical, cognitive, and emotional impairments and determine if the applicant has a functional limitation that can be supported by an IHSS-covered service. The more categories you need help with, the more money you get.

In other words, if Mom proudly sticks out her chest and says, "I don't need any help," you won't get any money. So, if there ever was a time to "monku, monku, monku," this is it.

Remember, there's a limit on how much IHSS will pay. So even if Mom is bed-bound and can't do anything, IHSS puts a cap on benefits paid. The maximum numbers of hours is 283 per month. They will pay the city or county's minimum wage, approximately \$17 per hour. If you get maximum hours in Los Angeles, for example, that's \$4,811 per month!!! That's "nothing to sneeze at."

Here's the good part — you get to pick the "care provider." You can elect to have IHSS pay a home care agency, or a family member, e.g., your daughter. That's right! IHSS will pay your adult child to help you live at home, e.g., domestic services such as housework, personal care services such as bathing, ambulation around the house, etc.

Perhaps the biggest obstacle to seniors qualifying for IHSS is income. Income and income from assets, such as income from property, will continue to be counted. IHSS is generally not available to seniors making more than \$1,677 per month, or couples making more than \$2,269 per month.

If you are slightly over this amount, \$200-\$500 per month, there are ways to lower your income by purchasing a supplemental dental plan or vision plan in order to qualify for IHSS.

Please keep in mind that the current law eliminating Medi-Cal's Asset Test will not affect Medi-Cal's estate recovery rules. Federal law requires Medi-Cal agencies to recoup payments for certain Medi-Cal benefits, long-term care, and home and community-based services for some Medi-Cal beneficiaries. Those recovery rules will continue to apply. Under the old law, the only way to avoid recovery is to have nothing left in your estate at the time of death.

But they've changed the law regarding Estate Recovery. As of 2017, California limits estate recovery to those estates that are subject to probate under California law. This is great news! Now you have DOUBLE the advantages for making your Revocable Living Trust: (1) Avoiding the legal nightmare called probate; and (2) Protecting your home from a Medi-Cal estate recovery claim.

Judd Matsunaga, Esq., is the founding partner of the Law Offices of Matsunaga & Associates, specializing in estate/Medi-Cal planning, probate, personal injury and real estate law. With offices in Torrance, Hollywood, Sherman Oaks, Pasadena and Fountain Valley, he can be reached at (800) 411-0546. Opinions expressed in this column are not necessarily those of The Rafu Shimpo.

Hirono, Meng Introduce Resolution Recognizing May as AANHPI Heritage Month

WASHINGTON, DC — Today, U.S. Senator Mazie K. Hirono (D-HI) and U.S. Representative Grace Meng (D-NY), Chair of the Congressional Asian Pacific American Caucus (CAPAC), introduced a bicameral, bipartisan resolution to mark May 2025 as Asian American, Native Hawaiian, and Pacific Islander (AANHPI) Heritage Month. The resolution recognizes the significant contributions that Asian American, Native Hawaiian, and Pacific Islander communities have made to this country.

"During Asian American, Native Hawaiian, and Pacific Islander Heritage Month, we celebrate the diversity and historic contributions of our communities, while also recognizing the challenges we have overcome," said Senator Hirono. "At a time when diversity is under attack and immigrant communities are being targeted across the country, I'm proud to join Chair Meng in introducing this resolution and reaffirming our commitment in this fight to build a more inclusive and equitable future for all."

"Asian Americans, Native Hawaiians, and Pacific Islanders have made invaluable contributions to our country and continue to play a vital role in shaping America for the better," said Rep. Meng, Chair of the Congressional Asian Pacific American Caucus. "In the face of recent efforts to erase our community's achievements, Senator Hirono and I remain steadfast in our support for the AANHPI community and will continue to champion our stories of triumph, sacrifice, and resilience that are integral to the story of America."

In the Senate, this resolution is cosponsored by Senators Tammy Duckworth (D-IL), Andy Kim (D-NJ), Susan Collins (R-ME), Tammy Baldwin (D-WI), Michael Bennet

(D-CO), Richard Blumenthal (D-CT), Cory Booker (D-NJ), Maria Cantwell (D-WA), Chris Coons (D-DE), Catherine Cortez Masto (D-NV), Dick Durbin (D-IL), John Fetterman (D-PA), Kirsten Gillibrand (D-NY), Maggie Hassan (D-NH), Tim Kaine (D-VA), Amy Klobuchar (D-MN), Ed Markey (D-MA), Patty Murray (D-WA), Alex Padilla (D-CA), Jack Reed (D-RI), Jacky Rosen (D-NV), Brian Schatz (D-HI), Adam Schiff (D-CA), Tina Smith (D-MN), Chris Van Hollen (D-MD), Mark Warner (D-VA), Raphael Warnock (D-GA), Elizabeth Warren (D-MA), and Ron Wyden (D-OR).

In the House, this resolution is cosponsored by Representatives Yassamin Ansari (D-AZ), Nanette Barragán (D-CA), Ami Bera (D-CA), Salud Carbajal (D-CA), Ed Case (D-HI), Judy Chu (D-CA), Debbie Dingell (D-MI), Lizzie Fletcher (D-TX), Valerie Foushee (D-NC), Robert Garcia (D-CA), Dan Goldman (D-NY), Jimmy Gomez (D-CA), Josh Gottheimer (D-NJ), Al Green (D-TX), Sydney Kamlager-Dove (D-CA), Ro Khanna (D-CA), Kimberlyn King-Hinds (R-CNMI), Raja Krishnamoorthi (D-IL), Susie Lee (D-NV), Ted Lieu (D-CA), April McClain Delaney (D-MD), Rob Menendez (D-NJ), Dave Min (D-CA), Kevin Mullin (D-CA), Ayanna Pressley (D-MA), Linda Sánchez (D-CA), Bobby Scott (D-VA), Lateefah Simon (D-CA), Marilyn Strickland (D-WA), Suhas Subramanyam (D-VA), Tom Suozzi (D-NY), Mark Takano (D-CA), Shri Thanedar (D-MI), Mike Thompson (D-CA), Jill Tokuda (D-HI), Paul Tonko (D-NY), Norma Torres (D-CA), Derek Tran (D-CA), Juan Vargas (D-CA), Debbie Wasserman Schultz (D-FL), and Bonnie Watson Coleman (D-NJ).

Inaugural ‘Stop the Hate Day of Action’ Convenes More Than 200 Community Leaders

SACRAMENTO — On May 13, more than 200 community leaders from across the state convened at the capital for the first-ever "Stop the Hate Day of Action" to educate policymakers on the increasing rates of hate incidents in California and the need for continued resources and support.

Leaders from Stop the Hate, a multiracial network of 180 nonprofit organizations committed to serving survivors of hate, participated in the Day of Action. They represented organizations serving Asian American and Pacific Islander (AAPI), African American and Black, Latino, Indigenous, people with disabilities, and LGBTQ+ communities throughout California.

Community leaders met with representatives from more than 100 legislative offices to shed light on how Californians are ending hate and to promote the essential role of their organizations in building healthy and safe communities. The "Stop the Hate Day of Action" was organized by AAPI Equity Alliance, Asian Health Services, Catalyst of San Diego and Imperial Counties, Orange County Asian Pacific Islander Community Alliance (OCAPICA) and The Center at Sierra Health Foundation in conjunction with a convening attended by more than 300 individuals the day prior.

"Our places of gathering are no longer safe and are under threat," said Khydeja Alam, executive director of the California Commission on Asian and Pacific Islander American Affairs (CAPIAA) in her opening remarks. "Our elders are scared to walk alone. Our youth are asking if they belong. We're here to remind lawmakers that hate is not over, but we're also

here to remind them that we are not powerless."

"Hate does not discriminate," said Manjusha Kulkarni, executive director of AAPI Equity Alliance. "Our multiracial coalition came together to highlight the continued increase of hate incidents in all of our communities. As we see the values of diversity, equity, and inclusion under attack, we must do all that we can to safeguard our communities here in California, to be a leader for our nation."

The program included remarks from Assemblymember Mike Fong (D-Alhambra), chair of the California Asian American and Pacific Islander Legislative Caucus (AAP-ILC); Assemblymember Alex Lee (D-Fremont), parliamentarian of the California AAPILC; Assemblymember Ash Kalra (D-San Jose); and former Assemblymember Phil Ting (D-San Francisco).

"Today is such a critical day for visibility at the capital," said Fong. "Hate is not going away. With the rhetoric that's out there now, Stop the Hate is more critical than ever in uplifting our communities and protecting our democracy. We must continue to invest in programs that serve all Californians, regardless of their race, religion, sexuality, or abilities."

The Stop the Hate program is the first of its kind, addressing hate and protecting California's communities. In its first year, Stop the Hate reached more than 3 million Californians through prevention and intervention services. The program is made possible by the Asian Pacific Islander (API) Equity Budget, a historic investment of \$165.5 million passed by the California State Legislature in 2021. Learn more at: <https://stopthehateca.org/our-story>

Pamela Mary Hamashita

Pamela Mary Hamashita, 73-year-old, Los Angeles, Calif.-born Sansei, passed away peacefully on March 20, 2025. Per Pam's request, no services will be held.

She is survived by her loving husband, Randy; sons, Brent Hamashita of Goleta, Calif. and Corey Hamashita; sister, Barbra Ikejiri; also survived by other relatives.

www.kubotamortuary.com (213) 749-1449

Pamela Mary Hamashita

Andrea “Andie” Kimura

A funeral service for Andrea “Andie” Kimura, 37-year-old, Los Angeles, Calif.-born Sansei who passed away on May 4, 2025 in Santa Monica, Calif., will be held on May 31, 2025, 11 a.m. at L.A. Hompa Hongwanji Buddhist Temple, 815 E. 1st St., Los Angeles.

She is survived by her husband, Jimmy Chhun; parents, Dennis and Lorraine Kimura; sister, Allie Kimura; uncles, Bill (Christy) Seki and Ronald (Lisa) Kimura; aunts, Susan (Peter) Hom, Janis (Henry) Banuelos and Mickey Kumamoto; also survived by many cousins and other relatives.

www.kubotamortuary.com (213) 749-1449

Andrea “Andie” Kimura

Stella Otsuka

A funeral service for Stella Otsuka, 101-year-old, Sacramento, Calif.-born Nisei who passed away on May 9, 2025, will be held on Wednesday, June 4, 2025, at 10:30 a.m. at Orange County Buddhist Church, 909 S. Dale Ave., Anaheim, CA 92804.

Stella is predeceased by her husband, Joe Otsuka and son, Donnie. She is survived by her loving son, Jimmy (Diane) Otsuka; daughter-in-law, Rosa Otsuka; seven grandchildren, and 12 great-grandchildren; also survived by many relatives.

www.kubotamortuary.com (213) 749-1449

Stella Otsuka

Masami George Ozamoto

A private funeral service for Masami George Ozamoto (101), who passed away on February 18, 2025, in Los Angeles, was held on Saturday, April 5, 2025, at WLA Buddhist Temple.

He is predeceased by his wife, Mary Ozamoto; and granddaughter, Michelle Ozamoto; and survived by his son, Rodney (Linda) Ozamoto; grandchildren, Michael, Bryan and Elyse (Lawrence Hsiung) Ozamoto; three great-grandchildren; also survived by many nieces, nephews, and other relatives.

www.kubotamortuary.com (213) 749-1449

Masami George Ozamoto

Sally Tagawa

Sally Tagawa, 78, a longtime resident of Montebello, Calif., passed away peacefully on April 17, 2025. She was preceded in her death by her husband, Raymond Tagawa; and is survived by daughter, Renee (Victor) Gil de Montes; son, Russell (Kathy) Tagawa; grandchildren, Lauren, Emma, Adam and Olivia Gil de Montes and Kenna and Nolan Tagawa; brother, Dennis Izumigawa. Private services were held at Rose Hills.

www.fukuimortuary.com (213) 626-0441

Sally Tagawa

Koichi Ono

Koichi Ono, 93, a Hawaii-born resident of Monterey Park, passed away on April 27, 2025, after battling cancer. He is survived by son, Daryl Ono; daughter, Cathie (Gary) Tani; grandson, Andrew Tani; and many nieces and nephews in California and Hawaii. He is predeceased by his wife, Hisako Ono; grandchildren, Christopher and Kelli Tani; his parents and all his siblings, and many friends and relatives.

A private family burial service will be held at Green Hills on June 27, 2025.

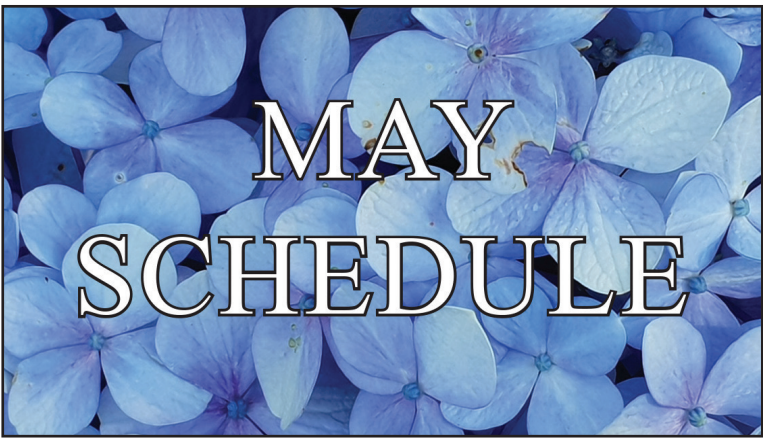
In lieu of flowers or koden, donations can be made to Kelli Tani Foundation at kellitani.com or sent to Kelli Tani Foundation, 24325 Crenshaw Blvd. #221, Torrance, CA 90505.

www.fukuimortuary.com (213) 626-0441

Koichi Ono

RELIGION

RAFU Event Calendar



Gardena Buddhist Church 1517 W. 166th St, Gardena 90247, 310-327-9400. Gardenabuddhist-church.org. May 25 (Sun), 9 am—Memorial Day service, Pacific Crest Cemetery, Redondo Beach; 11 am—Memorial Day service, Green Hills Cemetery, RPV; office closed. May 26 (Mon), 9 am-12 noon—Nokotsudo open; office closed.

Higashi Honganji Buddhist Temple 505 E. 3rd St, L.A. 90013, 213-626-4200. hhbt-la.org. Bishop Noriaki Ito.

Jodoshu North America Buddhist Missions P.O. Box 11068, Torrance, CA 90510, 213-346-9666.

Koyasan Buddhist Temple 342 E. 1st St, L.A. 90012, 213-624-1267. www.koyasanbetsuin.org.

Las Vegas Buddhist Sangha 4110 N Martin Luther King Blvd, North Las Vegas, NV 89032, 702-483-9754. LVBS.org. Led by Bishop Rev. Marvin Harada and minister's assistants. Please join us every 2nd and 4th Sunday of the month at 10 am.

L.A. Homba Hongwanji Buddhist Temple 815 E. 1st St, L.A. 90012, 213-680-9130. nishihongwanji-la.org. Rimban William Briones. Services are back in-person. We do recommend that masks be worn while indoors.

Long Beach Buddhist Church 2360 Santa Fe Ave, Long Beach 90810, 562-426-4014.

Montebello Plymouth Congregational Church 144 S. Greenwood Ave. Montebello CA 90640, (323)721-5568 Montebelloucc.org Join us for in-person and online worship service at 10 am Sunday mornings or Youtube.com/mpc-cucc. Contact mpcacc@montebelloucc.org for details.

Orange County Buddhist Church 909 S. Dale Ave, Anaheim 92804,

714-827-9590. Ocbuddhist.org. May 24 (Sat), 7 pm—Zoom BEC Japanese class (Rev Dr. Mutsumi Wondra). May 25 (Sun): No mindfulness service or Sunday service; no adult discussion or Dharma School. May 26 (Mon), 9 am—Memorial Day services at cemeteries (see website for list of cemeteries and times in the Korin); 9:40 am—Memorial Day service at OCBC. May 27 (Tue): Office closed. May 28 (Wed), 7 pm—Zoom mindfulness service. May 29 (Thu), 9 am—Tai chi class (in-person). June 1 (Sun), 8:30 am—Mindfulness service (in-person); 10 am—Sunday service (hybrid); 11 am—Adult discussion and Dharma School (in-person); 9 am-2 pm—Blood drive. June 2 (Mon), 10:30 am—In-person BEC Japanese class (Rev Dr. Mutsumi Wondra). June 3 (Tue): Office closed. June 4 (Wed), 7 pm—Zoom mindfulness service. June 5 (Thu), 9 am—Tai chi class (in-person). June 7 (Sat), 4:30 pm—Shotsuki Hoyo monthly memorial service (in-person). June 8 (Sun), 8:30 am—Mindfulness service (in-person); 10 am—Sunday service (hybrid); 11 am—Adult discussion and Dharma School (in-person); 12 pm—Stomach Health Project.

Pasadena Buddhist Temple 1993 Glen Ave, Pasadena 91103, 626-798-4781. Pasadenabuddhisttemple.org. Resident minister: Rev. Jundo Gregory Gibbs. Grounds of the temple closed through the end of May.

Senshin Buddhist Temple 1311 W. 37th St, L.A. 90007, 323-731-4617. senshintemple@gmail.com, senshintemple.org.

SNI Church (Seicho-No-Ie) South Bay Center 14527 S. Vermont Ave, Gardena 90247.

SNI Church (Seicho-No-Ie) Orange Center 2225 E. Lincoln Ave, Anaheim, 92806, 714-776-5759.

Union Church of L.A. 401 E. Third St, L.A. 90013, 213-629-

3876. www.unionchurchla.org. Email: English@unionchurchla.org, Nichigo@unionchurchla.org Weekly worship is held at 11 am in-person and on Zoom.

Venice Hongwanji Buddhist Temple 12371 Braddock Dr. Culver City, 90230. 310-391-4351. vhbtt.org. We are open for in-person Sunday and Tuesday morning services at 9:30 am, except for Tuesday, May 27. Services are also conducted by Zoom as well. Special services include the following: On Memorial Day weekend, there will be a variety of services, including gravesite visitations at Woodlawn, Evergreen, Green Hills, and Inglewood cemeteries, as well as a memorial service at our temple Nokotsudo. In addition, we will participate in the Japanese American Veterans Joint Memorial Service on Saturday, May 24, at the JACCC and the Bay Cities Japanese Community Joint Memorial Day Service at Woodlawn Cemetery on Monday, May 26. Please check our website, vhbtt.org, for more information.

W. Covina Buddhist Temple 1203 W. Puente Ave, W. Covina 91790, 626-689-1040. livingdharma.org. On Sunday, May 25, Sunday service will be held at 10 am both in-person and online. Dharma message will be delivered by Rev. Miyoshi. Discussion will follow. Please contact the temple (wcbt.livingdharma@gmail.com) to receive a meeting ID and passcode to join the service online.

W.L.A. Buddhist Temple 2003 Corinth Ave, L.A. 90025, 310-477-7274. Rev. Koho Takata and Rev. Koe Umezu. May 25 (Sun), 10 am—Memorial Day service; 11 am—Sunday matinee. May 26 (Mon), 9 am—Memorial Day service at Woodlawn Cemetery; office closed. May 28 (Wed), 7 pm—Jodo Shinshu class. May 31 (Sat), 11 am—Jodo Shinshu class. June 1 (Sun), 10 am—Dharma service, Dharma Kids program; 11 am—Dharma reflection session.

Wintersburg Presbyterian Church 2000 N. Fairview St, Santa Ana 92706, 714-740-9400. wintersburg.org.

Zenshuji Soto Mission 123 S. Hewitt St, L.A. 90012, 213-624-8658. Check for details and schedule changes: www.zenshuji.org. Zen Aerobics for Seniors and their family and friends on Sundays, 1 pm offered online Zoom and in-person when conditions are deemed safe. Call to confirm the schedule and check the website for additional classes.

Methodist Church 1850 W. Hellman Ave, Alhambra 91803, 626-284-3229.

San Fernando Valley Hongwanji Buddhist Temple 9450 Remick Ave, Pacoima 91331, 818-899-4030.

South Bay Adventist Church 401 S. Prospect Ave, Redondo Beach, 90277, 323-214-3123.

South Bay Japanese Episcopal Church 408 S. Broadway, Redondo Beach, 90277, 323-616-4208.

Sozenji Buddhist Temple 3020 W. Beverly Blvd, Montebello 90640, 323-724-6866.

St. Andrew's Episcopal Church 1432 Engracia Ave, Torrance, 90501, 310-328-3781.

St. Francis Xavier Chapel Japanese Catholic Center (Maryknoll) 222 S. Hewitt St, L.A. 90012, 213-626-2279.

St. John's Episcopal Cathedral 514 West Adams Blvd, Los Angeles, 90017, 213-747-6285.

St. Mary's Episcopal Church 961 S. Mariposa Ave, L.A. 90006, 213-387-1334.

Sukyo Mahikari Centers for Spiritual Development 860 E. Mariposa St, Altadena, 91001, 626-529-4160, 23151 Camino Altozano, Rancho Santa Margarita, 949-459-1409 and 3525 Lomita Blvd., Torrance, 310-987-3082.

Sunrise Foursquare Church 5853 Laurel Canyon Blvd, Valley Village 91607, 818-782-8738.

Sunrise Van Nuys Church 14705 Wyandotte St, Van Nuys 91405, 818-782-8738.

Tenrikyo Mission HQ in America 2727 E. First St, L.A. 90033, 323-261-3379.

Torrance First Lutheran Church 2900 Carson St, Torrance 90503, 310-320-9920.

Venice Free Methodist 4871 Centinela Ave, L.A. 90066, 310-822-8094.

W. Covina Christian Church 1100 E. Cameron Ave, W. Covina 91790, 626-917-0743.

Westlight Community Church

Sat, 4-9 pm, kendo demo at 5 pm, ondo at 7 pm; Sun, 4-8 pm, judo demo at 5:30 pm, ondo at 6:30 pm. Food, games, taiko, tea ceremony both days. Bon Odori practices May 30, June 3, 6, 10, 13 at 6:30 pm. Info: (818) 825-9583. valleyjcc@yahoo.com

JUNE 22-24 — 15th anniversary screening of “The Secret World of Arrietty” at selected theaters. June 22 (dubbed) at 4 and 7 pm; June 23 (subtitled) at 7 pm; June 24 (dubbed) at 7 pm. Academy Award nominee Hiromasa Yonebayashi's directorial debut with the legendary Studio Ghibli tells the story of little people called Borrowers who live out of sight of humans. Theater locations and tickets: www.fathomentertainment.com/releases/the-secret-world-of-arrietty-studio-ghibli-fest-2025/

JUNE 26 — Keiro Genki Living Workshop-Golf, 9 am-12 pm at Brookside Golf Course, 1133 Rosemont Ave, Pasadena. Instructor: Wataru “Watt” Tomita. For adults 55+. Session times: 9, 10 or 11 am. Maximum 10 attendees per session. Info/registration: www.keiro.org/what-we-do/events/genki-living-workshop#golf

JUNE 28 — Matsuri Fundraiser, 10 am-7 pm at Gardena Valley Japanese Cultural Institute, 1964 W 162nd St, Gardena. Featuring food, games, bingo, raffle drawings, beer garden, white elephant sale, plant sale, craft sale, indoor/outdoor entertainment, martial arts demonstrations. Info: (310) 324-6611, jci-gardena.org

JUNE 28 — “Kansen Nu Michi Tirashi — Lighting the Path for Future Generations,” 2 pm at James R. Armstrong Theatre, 3330 Civic Center Dr, Torrance. Celebration of 40 years of Okinawa dance featuring professional performers and musicians from Okinawa, California, Hawaii and Texas. Tickets: \$45 general, \$40 for students. Limited seating. Info: (951) 444-9097, https://kansen.live/tickets

JUNE 28 — West Covina Buddhist Temple Obon Festival at East San Gabriel Valley Japanese Community Center, 1203 W Puente Ave, West Covina. Info: (626) 689-1040, wcbt.livingdharma@gmail.com

JUNE 28-29 — San Fernando Valley Hongwanji Buddhist Temple Obon Festival at San Fernando Valley Japanese American Community Center, 12953 Branford St, Pacoima. Featuring dance, food, bingo, cultural exhibits and more. Info: (818) 899-4030, sfvbbt.org

JULY 3-27 — Philip Kan Go-tanda's “Yanke Dawg You Die” at East West Players' David Henry Hwang Theatre, 120 Judge John Aiso St, Little Tokyo. Previews: July 3-25; Opening Night: July 6. Starring Kelvin Han Yee and Daniel J. Kim; directed by Jennifer Chang. Understudies: Grant Chang and Jonathan Cheung. Info/tickets: www.eastwestplayers.org/blog/dydyd-2025-cast-and-creative

JULY 5 — Obon Festival at Senshin Buddhist Temple, 1311 W 37th St, Los Angeles. Hatsubon service at 4:30 pm; Bon Odori at 7 pm; Omairi in Hondo, Sento Shogon (1,000 oil lamps) at 9 pm; Horaku, Kinnara Taiko at 9:30pm. Dance practices: June 19, 24, 17 at 7 pm; June 29 at 12 pm; July 2 at 7 pm. Info: (323) 731-4617, https://senshintemple.org

JULY 12 — Ron Kobayashi (piano), Ken Yanai (sax), and Richard Lueras (bass) perform jazz standards and originals, 12-2 pm at Project Barley Square 1109 Van Ness Ave, Torrance. Info: projectbarley.com

Through JULY 12 — “Realms of the Dharma: Buddhist Art Across Asia” at LA County Museum of Art, 5905 Wilshire Blvd, Los Angeles. An international survey of Buddhism and Buddhist art, beginning with the religion's origins in India and following its spread through mainland and island Southeast Asia (Myanmar, Thailand, Cambodia, Vietnam, Indonesia), the Himalayas (Kashmir, Nepal, Tibet), and East Asia (China, Korea, Japan). Hours: Mon-Tue, 11 am-6 pm; closed Wed; Thur, 11 am-6 pm; Fri, 11 am-8 pm; Sat-Sun, 10 am-7 pm. Info/tickets: (323) 857-6000, www.lacma.org/art/exhibition/realms-dharma-buddhist-art-across-asia

JULY 12-13 — Belly Laughs, LA's first Asian American comedy and food festival, 12-11 pm at LA Live, 800 W Olympic Blvd, Los Angeles. Featuring 30 comedians, including Hasan Minaj, Kumail Nanjiani, Margaret Cho, Joel Kim Booster, Joe Wong, Helen Hong, Fumi Abe, Paul Ogata; 20+ food and beverage vendors curated by Mama's Nightmarket. Info: www.nederlanderconcerts.com/bellylaughsfestival

JULY 13 — Obon service and festival, 1-7 pm at Sozenji Buddhist Temple, 3020 W Beverly Blvd, Montebello. Info: (323) 724-6866, sozenjibuddhisttemple@gmail.com

JULY 19 — TaikoProject 25th Anniversary Concert, 7 pm at Walt Disney Concert Hall, 111 S Grand Ave, Los Angeles. An electrifying blend of taiko, koto, vocals marimba and shin-bone. With special guests Grammy Award winner Quetzal and shamisen virtuoso Sumie Kaneko. Info/tickets: https://www.musiccenter.org/tickets-free-events/lease-events/taikoproject-25th-anniversary-concert/

Through MAY 31 — “Key Hiraga: The Elegant Life of Mr H” at Nonaka-Hill, 720 N Highland Ave, Los Angeles. Hours: Tue-Sat, 11 am-6 pm or by appointment. Tumble down the rabbit-hole of Key Hiraga's work in the late '60s and early '70s and find yourself in a comical world of swollen extremities and orifices — a mute floating world where sex, lurid and illogical, is everywhere, and biology operates according to chaotic rules. Info: (323) 450-9409, nonaka-hill.com

JUNE 1 — Japanese Cultural Bazaar, 11 am-4 pm at Buddhist Temple of San Diego, 2929 Market St, San Diego. Teri chicken, chow mein, sushi, tacos, bakery, taiko, demonstrations, music, games and more. Free and open to the public. Info: (619) 239-0896, www.buddhist-templeofsandiego.org

JUNE 1 — Matsutoyo Kai 60th Anniversary Recital, 12 pm (doors open at 11:30 am) at Ken Nakaoka Community Center, 1670 W 162nd St, Gardena. Featuring Tayafumi Mochizuki aka Kahou Satokaze, Mme Matsutoyo Sato, Marisa Kosugi, Hiromiya Bando, Hidesomi Bando. Tickets: \$23 in advance, \$25 at the door, lunch and water included. Info: (310) 400-4707, www.matsutoyokai.org

JUNE 7 — 12th Annual Imagine Little Tokyo Short Story Contest Celebration, 3-5 pm at Japanese American National Museum, 100 N Central Ave, Little Tokyo. Winning stories in three categories — Adult, Youth, Japanese language — will be showcased with dramatic readings by special guests. Free with in-person or virtual tickets. Info: www.janm.org/events/2025-06-07/12th-annual-imagine-little-tokyo-short-story-contest-celebration

Through JUNE 7 — “Path to the Perfect Cup: Coffee Culture in Japan” at Japan Foundation Los Angeles, 5700 Wilshire Blvd, #100, Los Angeles. Hours: Mon-Sat, 12-6 pm; closed Sundays and holidays (May 24 and 26). This exhibition, organized in collaboration with specialty coffee shop Kurasu, explores the effects that coffee has had on Japan and the extraordinary contributions that Japan has made to the global coffee community. Free admission. Info: (323) 761-7510, www.jflalc.org/event-details.php/258/path-to-the-perfect-cup-coffee-culture-in-japan

JUNE 7-8 — Cultural Festival and Ondo at Southeast Japanese School and Community Center, 14615 Gridley Rd, Norwalk. Sat, 3-9 pm; Sun, 2-8 pm. Cultural performances and demonstrations, including happyfun-smile on Sun, 4-5 pm, games, bingo, food, Ikebana displays and more. Free ondo lessons Mon and Thur, May 29, June 2 and 5, 7:30-8:30 pm. Raffle drawing Sun, 7:30 pm. Info: (562) 863-5996, sejscc.org

JUNE 8 — Nanka Yamaguchi Kenjinkai Picnic, 11 am-3pm at George Elder Park, 1950 Wilcox Ave, Monterey Park. Info: Call/text Aki at (562) 234-5702 or email Nanka.Yamaguchi.Kenjinkai@gmail.com

JUNE 8 — Maryknoll Karate Club Bingo, 11:30 am-2:30 pm at St Francis Xavier Chapel Japanese Catholic Center, 222 S Hewitt St, Los Angeles. Delicious food, awesome cash pots and free parking. Info: (213) 626-2279, www.maryknoll.ska.org, www.ska.org

JUNE 8 — Yu Ooka Group, 5:30 pm (doors open at 5 pm) at 3355 Asian Grill, 1955 Torrance Blvd, Torrance. With Yu Ooka (guitar), Charito (vocals), Land Richards (drums), Tateng Katindig (keyboards), JV Collier (bass). \$25. Reservations recommended. Tickets: (310) 806-1131

JUNE 8, 14, 21 — “Prostitute Investigator,” a murder mystery by acclaimed playwright Kohei Tsuka, at Broadwater Second Stage, 6320 Santa Monica Blvd, Los Angeles. June 8 at 5 pm, June 14 at 6:30 pm, June 21 at 5 pm. Presented by Ensemble Tenshi; directed by and starring Tomoko Karina, with Christian Lowery, Thomas McKean, Quinn Vu. Tickets \$25. Info: info@ensembletenshi.org, www.hollywoodfringe.org/projects/12122

JUNE 14 — Hiro's Bokashi Workshop, 10 am-12 pm at Isamu Noguchi Plaza, 244 S San Pedro St, Little Tokyo. Learn the Okinawan tradition of bokashi composting. \$15 + \$1.50 fee, including a DIY bokashi bag and refreshment. Supplies and bokashi kit: \$35. Info/tickets: https://jaccce.org/events/hiros-bokashi-workshop-june-2025/

JUNE 21-22 — Summer Natsu Matsuri Festival at Venice Japanese Community Center, 12498 Braddock Dr, Los Angeles. Sat, 12-9 pm; Sun, 11 am-8 pm. Featuring food, games, martial arts demonstrations, cultural exhibits, taiko, ondo dancing, music by Elemental Funk. Raffle drawing Sun at 7 pm. Free; no pets. Info: www.vjcc.com

JUNE 21-22 — Obon Festival at Valley Japanese Community Center, 8850 Lankershim Blvd, Sun Valley.

We welcome submissions to our Events Calendar. Email information to jyamamoto@rafu.com.

MAY 24-JUNE 25 — Free ondo dance practice at Long Beach Japanese Cultural Center, 1766 Seabright Ave, Long Beach. Wed (May 28; June 4, 11, 19, 25), 7:30-8:30 pm; Sat (May 24, 31; June 7, 14, 21), 6-7 pm. No previous experience needed. Dances will be performed at the Summer Festival on June 28. Info: longbeachondo@gmail.com

MAY 25 — Memorial Day service, 2 pm at Gardena Valley Japanese Cultural Institute, 1964 W 162nd St, Gardena. Sponsored by 4th District VFW Post 1961.

MAY 25 — Taiko drumming with Togen Daiko, 2-3 pm at Marvin E. Smith Community Room, Grant R. Brimhall Library, 1401 E Janss Rd, Thousand Oaks. Presented by Ventura County JACL. Info: venturacounty-jacl@gmail.com, vcjocl.org

MAY 26 — Memorial Day Service, 9 am at Woodlawn Cemetery, 14th St and Pico Blvd, Santa Monica. 66th anniversary commemoration on LA's west side at the Ireito (memorial tower) to honor Issei pioneers and Nisei soldiers who died in WWII and the Korean War.

MAY 26 — Memorial Day Service, 3 pm at Westminster Cemetery, 14801 Beach Blvd, Westminster. Sponsored by Kazuo Masuda VFW Post 3670.

MAY 28 — “Patsy,” a play about Patsy Takemoto Mink, the first woman of color in Congress, written by Alison Minami, directed by John Miyazaki, 4-5 pm at Lennox Library, 4359 Lennox Blvd, Lennox. Cast: Chloe Madrigal, Pauline Yasuda, Evelyn Wu-Coffey, William Bremer, Andrew Brown, Stephen Haci. Info: www.eastwestplayers.org/patsy-tour

MAY 31 — Bazaar sponsored by Koreisha Senior Care & Advocacy and Seinan Senior Citizens' Club, 11 am-4 pm at Seinan Senior Center, 3116 Jefferson Blvd, Los Angeles. Seinan Karaoke Club will participate. Free parking available at the center. Proceeds will support adult day care. Info on co-sponsorship and donating merchandise: Junko Ashida, (626) 632-2560; Kenji Irie, (213) 200-2391; Teruko Watanabe, (310) 753-6220; Rachel Koza, (323) 770-6481 (leave a message)

MAY 31 — Japanology Fair, 11 am-4:30 pm at Valley Japanese Community Center, 8850 Lankershim Blvd, Sun Valley. Vintage kimono, yukata, hoary, accessories, handmade jewelry, handcrafts, ceramics, calligraphy art, handmade sashimi, clothing, bags, other Japanese items. Info: info@japanologyfair.com, www.japanologyfair.com

MAY 31 — Community Voices: AAPI Film Festival, 1-3 pm at Peninsula Center Library, 701 Silver Spur Rd, Rolling Hills Estates. A curated collection of short films directed by senior and amateur AAPI filmmakers. During a Q&A session, the directors will discuss their creative processes. Joint program with VC Archives and their Digital Histories program. Info: https://pvld.libnet.info/event/13538592

MAY 31 — Okinawa Association of America's Nuchaashii Potluck Gathering (last Saturdays of the month), connecting and fostering community through food and culture, 4-6 pm at OAA Center's Yamauchi Bldg, 16500 S Western Ave, Gardena. Parking lot behind the buildings off 165th Place. Break bread with community members, learn/practice self-intros in Uchinaaguchi (Okinawan language). RSVP: tinyurl.com/oaanuchaashii, (310) 532-1929. Free admission with 1 potluck dinner dish. To maintain connections made during the pandemic lockdown, gatherings are hybrid every other month (potluck at 4 pm and online via Zoom starting at 4:30 pm Pacific).

MAY 31 — ESL (Ethnic Super Laughs) Comedy, 8 pm at The Crow, 2525 Michigan Ave, Santa Monica. Hosted by Kazu Kusanno and Miyo Yamauchi. AAPI Heritage Month special: all-Asian lineup. \$20. Info: (424) 322-8017, https://crowcomedy.com

MAY 31 — Makoto Taiko 2025 Concert, “Hishō,” 7-9:30 pm (doors open at 6:30 pm) at Aratani Theatre, 244 S San Pedro St, Little Tokyo. Through dynamic rhythms and expressive motion, Makoto Taiko will celebrate the joy of soaring — spinning, moving with the drum, and grooving with heart and soul. With guest artists Eri Uchida and Shoji Kamada. Price: \$22-\$45 + \$2.20-\$4.50 fee. Info/tickets: https://jaccce.org/events/makoto-taiko-2025-concert-hisho/

2650 Federal Avenue, L.A., 90064.

W.L.A. Holiness Church 1710 S. Butler Ave, L.A. 90025, 310-473-2138 (E), 310-473-2130 (J).

W.L.A. United Methodist Church 1913 Purdue Ave, L.A. 90025, 310-479-1379.

ウクライナ 進む支援離れ

関西ゆかりの2人 現状聞く



ロシアからの侵攻を受けるウクライナの混迷が一層深まっている。ロシアに融和的な米国のトランプ政権発足による支援の先細りが懸念され、現地の人の不安と疲弊は厳しさを増している。関西を拠点にウクライナへの支援を続ける日本ウクライナ文化交流協会の小野元裕会長と、関西在住のウクライナ人国際政治学者、グレンコ・アンドリー氏にウクライナの現状を聞いた。（聞き手 黒川信雄）

文化交流で関心持ち続けて

日本ウクライナ文化交流協会 小野元裕氏



私たちはウクライナ西部に避難所を建設、運営して、戦災孤児や夫を失った女性、傷病軍人らを入りハビリのために受けている。米国の支援が滞り戦争の被害が増えれば、受け入れが必要なのが、さらに増えるのではと懸念している。

ロシアによる侵攻が始まって3年以上が経過する中、残念ながらウクライナへの支援も減っているのが実情だ。当初は寄付などをしていた人々が、どうしても支援疲れというのか、支援への関心も失ってしまっている側面がある。

このような問題に対しては、関心を持ち続けることができない。直接的な支援ではないが、ぜひウクライナの文化への関心を持ってもらえればと思う。

「力の空白」は中国を利する

国際政治学者 グレンコ・アンドリー氏



ウクライナ侵攻へのトランプ米大統領の関与について、理解すべき重要な点がある。トランプ氏は「ロシア、ウクライナの双方に停戦に向けた圧力をかける」と主張しているが、実際にはウクライナに圧力をかける

ロシアの目的は現在の占領地域の支配ではなく、あくまでもウクライナ全土を支配することだ。だから米国のウクライナへの軍事支援を止めれば、ロシアがウクライナに対する侵攻をさらに進めやすくなる。ロシアは米国の「交渉」を延々と続ける考えだろう。問題の解決に向け、進展しているとの印象を与える狙いだ。

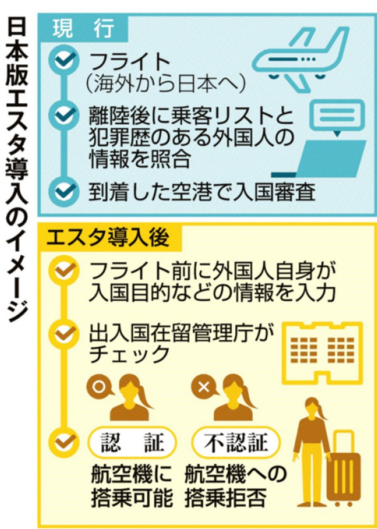
米国のウクライナだけでなく、途上国向け人道支援を担ってきた国際開発局（USAID）の事業による効率化は限定的とみており、審査時間の短縮につながる案を検討。デジタル技術を生かし、対面での手続きを減らすことを考えている。

来日客事前審査導入

ビザ免除国、10年度中に

日本版ESTA

外国人の不法就労やテロを防ぐため、政府は、渡航前にオンラインで滞在目的などを尋ねて入国可否を判断する制度の創設を進めている。米国の電子渡航認証システム（ESTA）をモデルに、現在日本に方向を向けている。



新たな制度では、渡航の数日前までに氏名や、滞在の目的や場所といった情報を提供してもらうことを想定。入管庁がチェックし、不法就労などが疑われる場合は、航空機に搭乗させないようにする。外務省によると、米国や韓国など71の国と地域が短期滞在ビザの取得を免除されている。



観覧EXPO

涼を楽しむ

夏が近づき、大阪・関西万博の会場は汗ばむほどの日が増えてきた。大屋根リング内側に海水を引き込んだ「ウォータープラザ」では噴水ショーが披露され、ひとときの涼を楽しむ観客から歓声が上がっている。

湊町365

1970年大阪万博のシンボル「太陽の塔」が、国の重要文化財に指定された。一度は取り壊しを検討されたが、「高度成長期を象徴するレガシー（遺産）」と評価され、まさに日本が誇る歴史遺産になる。▼かつて歴史の専門家が、「文化財としての価値は100年たたないと判断できない」と聞いたことがある。国宝や重要文化財といえは、つい奈良や京都の寺院や仏像などが連想され、千

年以上の歴史を刻む▼太陽の塔は、まだ55年。歴史が浅いというのでは、重要文化財となれば後世に伝える責務がさらに増す。高約70m、鉄筋コンクリートと鉄骨の建造物を1000年、2000年、さらに先までいかに保てるか。老朽化を理由に撤去してしまうわけにはいかない。「人としての喜びの声もあつた。感動の記憶とともに未来につないでほしい。」

羅新短歌 2025年2月 松江久志選

佳 透き通るが流れは我が心時に激く時に穏やか 中原キョー
佳 残された時間をふつと思ふと己の年齢を指折り数える 青木泰子
佳 健康を重く味付け薄くして食材活かす料理に励む 岡田善枝
佳 雨後の庭草と仲良し球根があらちろに花を咲かせる 高田和子
佳 最後の住まいとならんこの家に馴染んで行かん夫と共に 藤原 春
佳 出来立てのお好み焼きを運び来しロボット君に「ありがとう」言う 岩田純子
佳 機窓よりニメラルド色の海臨みキラッと輝くタイモン ドヘッド ハワイ 真知子
佳 二十余年住みおし地が山火事に遭いて友らの安否確かむ ウォン京子
佳 黙々とバスルに興ずる母の目は幼に戻り輝きを増す えがわようこ
佳 三本の指の出方教わって皆に見てる孫誕生 中川武子
佳 厄年の33歳迎える教師に贈る長いスカーフ 山本民子
佳 日が落ちて金星星光りだ夢は広がる惑星並び 岩田かづる
佳 指先のその温もりを染みて毛糸編みつつ冬は過ぎ行く 北加 石井志をん
佳 玄關の脇に咲く瓜の花訪れしに笑顔もたらす 片岡節子
佳 お気に入りの数珠を手に元と後にはなにか貰ってくぬか 佐賀原 大坪伸子
佳 平凡な日常こそ平和だと昨日も今日もトイ 磨けり 細刈 巖
佳 市が立つ田舎を訪ね買い付けの我ら外人注目 菅美英子
佳 草刈りに刈れるまでの命があらちろで必死に生きる 近藤 小夜
佳 笛太鼓全身呼吸祭り同じ阿呆なら踊らにや損損 魚谷徳子
佳 雨の後濃くなるみどり伸びる枝普段の今日の光がきかなと 岡田和知子
佳 とりとめもない話でも傍におり頼っていた夫は今亡き 津嘉山孝子
佳 暗き溝にまみれた子猫追い吾子は近づくそと近づく 富山県 夏野陽子
佳 落葉を終えて因太枝見せる庭木にこそ今朝日は夏の日 宮崎 博
佳 鉢植えの三十近く部屋に置き芽吹きつけて朝顔がしき 大 庵 森本麗子
佳 庵の絵の描くすしの多きな未熟なれども 枚残す 金川紀恵
佳 三方の窓の鏡戸巻きあげて雪の終日舞を見る 山田淑子
佳 山つじ乱れ咲く空熊蜂の飛び交う山道今は懐かし 北加 オコンネル恵子
佳 切り抜きて何もあらぬレシはたまりにたまりどつちには 名建築次
佳 日中の灯りはついていて尚ももっと光をを請うるの女 ブランドにもめめに水を注ぎ入れ忘れてないヨリスの 堀 勝
佳 使わずに何体ない棚のせ幾年過ぎで断捨離となる 西田禮子
佳 心情を草書で書いて手渡すも 封を開けずには持ち帰る 田中公一
佳 熱波来て去ればとんと秋が来たやさしい夜明けに静かな 宮城 國子
佳 梅の花今年もみよと咲きほころ如月の風が身にしみてる 大竹幾子
佳 面影となりせば母よアメリカに描いて来ませ今宵満月 折れそうなど日々もありしが生かされてきし八十五年は 松江志志
佳 贈物 大竹幾子
佳 羅新短歌には、短歌を作ったことがない人、又一般のどなたの投稿も歓迎します。 短歌は自分で作っていると、面白く、楽しさがわかってきます。趣味として最高です。 興味がある方は松江まで連絡してください。818-246-833 MasushitaH4@gmail.com 尚、羅新短歌への投稿は毎月20日が締め切りです。

新移植林 2月

佳 古くは古くは九十歳平安の世へ生徒誘う 河合しのぶ
佳 立春に寒風立ちて歩みゆく息も苦しくシガタは真冬 西岡 正治
佳 押し車に植物園鑑この町に母の通いし歌会ありき 大坪 伸子
佳 春つ雨のしずかに降りそそぐ木連濡れて花びらの落つ 宮林 淑子
佳 苦勞して着替え済ませたその後ボタンホルルの目合わせを 美子ホーキンス
佳 知る 山根洋子コリンズ
佳 隣家の息子が母の死を告げわく姿やあわれをさふ 中津川雅子
佳 雪雲の向こうは日は太陽が昇る思い出させる燃える朝焼け 中野隆一郎
佳 雨のあと思はず裸木の枝々に春の芽吹きがもう灯つて 市川 恵美
佳 母逝き三十年を過ぎしおり短歌作りはまた道なかば 市川 恵美
佳 感情の使い方だけ改めてわたしはまるで生まれ変わった アダムス理恵
佳 パーズは八十路を祝う耳飾り美しけれと我が娘の言いで 石井志をん
佳 白鷺は砂漠の庭に降り立ちて小さき蜥蜴を吞みこにせり 中條喜美子
佳 締め切りは毎月15日。 短歌に興味のある方々でも歓迎します。 送り先 Kinkichu@aol.com

時鳥俳句会 2月

佳 久方の恵みの日差し春近し 佐藤 次子
佳 春立ちて新たな思ひ一歩出づ 近藤 小夜
佳 早春や傾城風と日影の誘ひ 近藤 小夜
佳 昨より続く裾野や春立来たる 佐藤 次子
佳 軒下の梅一輪や月明かり 佐藤 次子
佳 雨の庭の草木も青々と 佐藤 次子
佳 旧正を祝ひ賑はふチャイナタウン 佐藤 次子
佳 一人一句 佐藤 次子
佳 早春の風まだ寒く散歩道 佐藤 次子
佳 早春の狭庭巡りて蝶の舞ふ 佐藤 次子
佳 目に涙せる甲子園春来たる 佐藤 次子
佳 街路樹の蓄続々凍れるむ 佐藤 次子
佳 春風し触れる木の芽の瑞穂のごと 佐藤 次子
佳 春浅し熱き茶とお粥の膳 佐藤 次子
佳 春浅し羅府の日差ししりの難し 佐藤 次子
佳 俳句に興味のある方は何卒、浜扶嗣子にご連絡下さいませ。 FUJIKO HAMA 2541 Delta Ave, Long Beach, CA 90810 (562) 426-4858

胡桃短歌会 2月

佳 水たまり空を切り取り映し出す逆さ空にも雲流れ行く 新田 邦子
佳 憂きことの心の端はたに余るまま紫あはく昏る西空 今井その子
佳 朝焼けが夜時雨追いつて焼野原派風風の若葉が萌える 西島 幸彦
佳 東風こち吹かば君が便りを聞かせ来よ庭の水仙首を伸ばさむ 小倉ニナ
佳 理屈なし美味しさを美味しと思ひて食べる私の幸せ 尾崎 梅安
佳 春上りい堅き新芽に呪文かけ赤き服らみいと愛らしき 森田のりえ
佳 新婚の二人の祖母はソルとカメ目出たき面前に宴も和みぬ 鈴木 八重
佳 月を見て恋人を想う藤式部あれ我には鬼しか見えぬ 土肥 明子
佳 フイキの毎金曜日の夜に咲く仕掛け花火の凄まじさに 日下部 昭彦
佳 温かい義弟特製味噌汁と生きたと元気づけられ 横田 淑子
佳 文字「一」命と清書かきて付つ庭に言兆招く南天の朱 小川 須美
佳 天の恵みの中に幾千の金柑の実は太りつつあり 須美 敦子
佳 ノートルダム光と影を返さつて又は悠久の時を流るる 須美 敦子
佳 無難なり過去全てが消えたと言ひぬ 米谷ふみ子の家 須美 敦子
佳 が焼け落つ（パシフィック パリセードの米谷） 須美 敦子
佳 KOTOH TANKAKAI Asuko Suzuki 20235 Rim Ridge Rd, Walnut, CA 91789 atsuko_san@verizon.net

USA田鶴の会2月句抄

佳 一人一句抄（順不同） 高岡 啓子
佳 炭づきの趣味でふたでありしかな 高岡 啓子
佳 胸元の色さきまさま重ね着に 小森 容子
佳 赤い傘ゆつくり過ぎる雨時かな 渡辺 礼子
佳 餅つきし遠き波音冬の夜半 阿ーテス道子
佳 静けしの親子揃ひて杵の音 米司 紀子
佳 近く命生まれし命惜しむ 中野 詩万
佳 帰きし子と触れ合ふ年惜しむ 佐藤 次子
佳 父と旅し比叡山小春空 浜 扶嗣子
佳 USA田鶴の会第234回誌上句会（2月15日） 武市 治子
佳 水田むつみ選・特撰3句（順不同） 武市 治子
佳 一瞬で常しくす山の火事 武市 治子
佳 ロサンゼルス近郊の山火事が鎮圧するまでに二十四日かかったと報じられているが、その大きさに日本では考えられない。近郊に住んでいる人にとってはどれほどの恐怖だっただろう。まさか一瞬で何もかも失くしてしまふ火事の怖さ。災害に遭われた方がいらしやらないことを祈るばかり。

佳 燃え落ち家立ち尽くす人寒し 鳴 幸佑
佳 原因はとも角火事程恐ろしいものはなく、ましてや自分の家が燃えるのを見る程怖くはない。寒さの中、喪失感で立ち尽くしている人の表情が想像できる。まさに人寒しの季節に身震いする。 高岡 啓子
佳 父と子の触れ合ふ竹刀寒稽古 中野 詩万
佳 いきりぶつかり合つて竹刀の稽古をしていることは素晴らしい。ましてやびつと身の締まる寒稽古だからこそ終わりの後の父と子の関係も深くなっている筈。

佳 初風呂に夢のあふるる赤子かな 中野 詩万
佳 赤ちゃんとのお誕生おめでとう！初めはお湯で拭くだけで、なかなかお風呂には入れないとか、しかし一月二日の初風呂に赤ちゃんとのお湯が使えるとは幸せなこと。初風呂だからこそおさら夢の膨れるばかり。家外おぼあやんが入れているのかもしれない。



佳 働けば楽しみ増える年の暮 渡辺 礼子
佳 十月のなるとしなればならないことばかり増える。それまでやっておけばよかったと後悔しても始まる。新年をきれいに迎えるには、家中の掃除を計画たててしなければならぬが、少しづつきれいにたてていくのが嬉しい。

日系人教授が襲われ重傷

ヘイトクライム 車両による殺人未遂

イラスト・ロサンゼルス・カレッジ歴史学教授のアキ・マエハラさん(71)は、ヘイトクライムとみられる襲撃を受けて重傷を負い、現在も回復に苦しんでいる。加害者は依然として逃走中である。

友人グロリア・カブレラさんが立ち上げたオンライン募金サイト「GoFundMe」ページには、マエハラさん本人による以下の声明が掲載されている。

「4月29日(火)、自転車で帰宅中に背後から車のヘッドライトが見えた。振り返ると、車が自分に向かって直進していた。衝突を避けようとした。衝突を避けようとした道の方へと向かった。『チンク野郎!』という叫び声とともに車が衝突し、『チンクラングー!』という声も聞こえた。倒れた自分の横を車は

そのまゝ走り去っていった。チンクはアジア系への差別や侮辱を意味する英語の蔑称である。マエハラさんは「脳震盪、頸骨の骨折、首の負傷、顔から胸部にかけての腫れと打撲、肋骨・腰・太もも・足首の打撲、さらに肘の皮膚は裂けていた。退院軍人VVA病院に1日入院した」と記述し、さらに続ける。

「かつての同居人に白人至上主義団体との関係がある人物がおり、その関連のヘイトグループから個人的な脅迫を受けたことがある。現在、



【写真上】マエハラさんが撮影したはれ上がった顔【同下】病床で治療を受けるマエハラさん



縫合されたマエハラさんの肘

「いま最も急を要するのは、プロの訪問介護ヘルパー(HHA)を雇うための資金となる。HHAは、包帯の管理、食事の準備、服薬管理、洗濯などを担い、傷口を清潔に保つ役割を果たす。そして今のような危機的状況では、マエハラさんには精神的・情動的・経済的な支援が不可欠である」

現在ワシントンや極端な「MAGA系キリスト教右派」による非白人市民への暴力の

正当化によって、ヘイトクライムは急増している。マエハラさんは、米国史および植民地時代における人種観と差別の歴史を教えており、アジア系米国人研究、チカーノ研究、アフリカ系米国人研究、米先住民研究なども担当してきた。今回の襲撃は、彼が若者に教えているテーマゆえに計画的に狙われた可能性もある。

「KKKのメンバーを公言するシャイロ・ヘンドリックスが5歳の自閉症の黒人児童を中傷する動画で数百万ドルを集めているこの時代に、マエハラさんのように命を賭わられた被害者のために必要な支援金を集めることは、あまりにも困難である。車を運転していた男が、マエハラさんを殺そうとしたことを正当と考えていたのは恐ろしい事態である。幸いその目的は果たさ

和食で山火事被災者を支援 J R A、収益全額を寄付

6月9日 すし、刺し身、地酒の試飲など



刺し身と巻きずしが盛られた舟盛り

米国日系レストラン協会(JR A)は、1月にロサンゼルスで発生した山火事の被災者を支援するチャリティ・ディナー「SUSHI & SAKÉ FOR WILDFIRE RELIEF」を6月9日(月)午後5時から8時まで、ハリウッドのジャパン・ハウス(601 Hollywood Blvd.)で催す。

火災はすでに鎮火したが、今なお多くの被災者が住居の確保や元の日常生活に向けた継続的な支援を必要としている。

「イベントは、『日本食』の力で、被災地に笑顔と希望をの旗印の下、日系レストランと日本食関連企業が一堂として取り組み、JR Aの活動の趣旨である『日本食文化の魅力発信』とともに、被災者支援の輪を広げていくことを目的とする。イベントの収益は全て被災地の復興支援に充てられる。JETROロサンゼルス事務所、ジャパン・ハウス、在ロサンゼルス日本総領事館が協力。当日はイベント参加者に豪華な料理が振る舞われる。新鮮な魚介をぜひたくに使用した巨大な舟盛りが並び、刺し身と巻きずしが食べ放題となる。多種多様なブースが会場を彩り、地酒の試飲では厳選された日本各地の銘酒を飲み比べることができる。日本食品などのお土産が付く。入場限定100人ものチケットは150ドル。購入はEventbriteのウェブサイト

www.eventbrite.com/sushisake-for-wild-fire-relief-tickets-13126083699

最新情報はJR Aウェブサイト(https://jraamerica.org/)やインスタグラム(@jraamerica)などのソーシャルメディアで公開中。

問い合わせはJR Aの事務所まで、電話213・448・8163。

健康管理は
広告が掲載されている
医療施設を参考に!

健康一番
健康器具 健康食品も
掲載広告をチェック

あなたのニーズにあった
商品をお探し下さい

羅府新報のClassifiedも
お手伝いしています

広告掲載のお問い合わせは
電話(213) 629-2231
Fax (213) 687-0737

SuperLotto Plus

5月14日(水)実施分

●当り番号 [6・19・39・42・46]
●メガナンバー [8]

5月17日(土)実施分

●当り番号 [11・17・18・40・44]
●メガナンバー [24]

詳細はホームページでご確認ください
https://www.calottery.com/draw-games/superlotto-plus

舞台劇「売春捜査官」を上演

ハリウッドの演劇祭で3回

つかこうへいの不朽の名作

定されている。日本の演劇ファンにはなじみの作品。当地で活動する俳優の香里菜知子が戯曲の英訳と演出を手掛け、主役の女性警官・木村伝兵衛も演じる。

アンサンブルTENS HIはこれまで、「ブロードウェイワールド・ロサンゼルス地区部門賞」の作品賞を受賞した壮大な時代劇「SHIIZ UKA」や、ノミネートされた「紅炎の城」などを公演し、いずれも高い評価を得てきた。今回の舞台は日本の人気現代劇を英語圏の観客にも違和感なく受け入れられる

作品に仕上げた点で、注目を集めている。

売春捜査官 警視庁の女性刑事部長・木村伝兵衛は、その大胆不敵で有名。正義と義理人情のためならどんな手も使い、たとえ最愛の人を失うことになってもいいとわい。

伝兵衛の忠実な部下・戸田貞行は、ふるさとの本村村にある両親に、自分がゲイであることを打ち明けられずにいる。そんな2人が、五島列島出身の大山金太郎が幼なじみの恋人・山口愛子を殺害した殺人事件の捜査を任される。事件発生直前には、五島列島

の誇りであった李大全が自ら命を絶っていた。

そんな中、刑事の熊田留吉が八王子から伝兵衛の捜査室に転勤となる。2人はかつて恋人同士。熊田はこの殺人事件に秘める謎を守ろうと必死に奔走する。事件の裏には、長崎の小さな五島列島の秘密が隠されていた。伝兵衛は大山金太郎を「超一流の犯罪者」に仕立て上げようと決意するが、失われた純粋、愛情、欲望が熟成で起こった殺人事件をめぐって絡み合う。

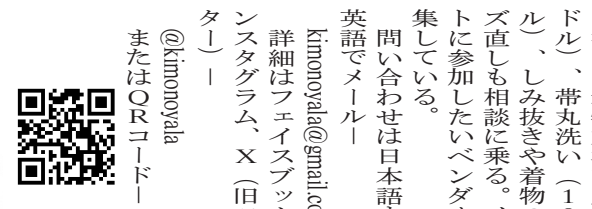
△舞台の日時は次の通り。
・6月4日(日) 午後5時
・6月14日(土) 午後6時半
・6月21日(土) 午後5時
チケットは25ドル。購入はハリウッド・プリング演劇祭のウェブサイト
https://www.hollywoodtheatre.org/tickets/12122
info@ensemblenshi.org
アンサンブルTENS HIのウェブサイト
https://ensemblenshi.org/

中古着物と和物セール

着物クリーニングの受け付けも

25、26日 トーレンスで

「和」を「Katie Ave」で開催される。両日とも午前11時から午後4時半まで。会場は日本舞踊スタジオなので、販売エリアは和装小物、手作りアイテムなどをバザー形式で販売するセール。詳細はフェイスブック、インスタグラム、X(旧ツイッター) @kimonovala またはORコード



また、ORコード

も行う。着物丸洗い(100ドル)、帯丸洗い(100ドル)、しみ抜きや着物のサイズ直しも相談に乗る。イベントに参加したいベンダーも募集している。

問い合わせは日本語または英語でメール
kimonovala@gmail.com
詳細はフェイスブック、インスタグラム、X(旧ツイッター) @kimonovala

パソコン、タブレット、スマートフォン、お使いの端末に対応しました



産経電子版

産経新聞が日本時間で毎朝夕届きます！

進化した電子新聞

- 好きなデバイスで紙面が読める
- 電子版限定の特別面を掲載
- 原則フルカラー対応



電子版で使える！ 便利な機能

- バックナンバー 90日
- スクラップ機能
- 地域ページ切替自由
- 記事キーワード検索

※スクラップとキーワード検索はアプリ専用の機能です

詳しくは産経電子版サイトにアクセス！

http://denshi.sankei.co.jp

産経新聞

月額購読料 1,800円 (税別)

サンケイスポーツ

月額購読料 2,000円 (税別)

月々の購読料は日本円の定額です。ドル建て口座からの引き落とし額は、月々の為替に合わせて変動します。詳細はお使いのクレジットカード会社におたずねください。

優秀な人材を探しています



素敵な仕事を望んでいます

(213) 629-2231
Fax (213) 687-0737
701 E 3rd St #130
Los Angeles CA 90013-1789

広告の申し込み

羅府新報の
クラシファイドに
おまかせ下さい

今年創立70周年を迎えた南加庭園業連盟（SCG）は、このほど、ロサンゼルス日本文化会館（JACC）で記念式典を開催し、併せて同館内に新設された「日系ガーデナー顕彰の碑」の除幕式を行った。（長井智子、写真も）

当日早朝、ロサンゼルスでは珍しく雨が降ったが、雨上がりのJACC日本庭園「清流苑」は、一層清々としたたたまいで来場者を迎えた。式典は和太鼓グループ「氣心太鼓」の力強い演奏で開

南加庭園業連盟70周年で式典 日本人庭師の顕彰碑お披露目 日系社会の育成に貢献



から大きな拍手が沸き起こった。銘板には「清流苑」と日系社会の育成に貢献した日系ガーデナーの功績と、一句の緑化の美。（「ガーデナー川柳」）が日英両語で紹介されている。除幕はSCGFのブライアン・ヤマサキ会長と在ロサンゼルス総領事の曾根健孝氏

の1世が庭園業に就き、白人社会の中で「日本人は真面目で正直」という草の根の評判を築いてきた。彼らの勤勉で造られたもので、当時のSCGF会員が休日返上で2年かけて造園。以来今日ま

ヤマサキ会長「新たな世代に継承」 関氏、連盟の歴史と川柳紹介

除幕式の後、場所を室内に移し、新役員の任命式が行われた。昨、森作正男副会長が自作の詩「南加庭園業連盟の詩」を吟

で、同連盟はボランティアで高底のある三角地を活用して造成されたもので、当時のSCGF会員が休日返上で2年かけて造園。以来今日ま

その後、日本庭園保存会の岩下寿盛会長の音頭で乾杯し、JACCシェフによる会席料理が振る舞われた。続く講演では、写真家・絵本作家、当地の川柳会「羅新川柳」の選者でもある関氏

が、SCGFの歴史や川柳を紹介した。関氏は日系ガーデナーの川柳を研究し、「ガーデナー風雲録」を編纂している。日系ガーデナーの川柳に詠まれた心情は、来場者の共感を呼んだ。また、南カリフォルニアのガーデナーの父と呼ばれた故・南雲正次氏

の功績も紹介された。現在、SCGFはロサンゼルス郡とオレンジ郡に11の支部を擁するが、日系人の庭園は設置場所を早く提供し、碑の製作費は多くの寄付に支えられた。

一般公開されておらず、イベントを通しての散策か、ノグチプラザから見下ろすの鑑賞に限定されている。JACCによるそれは一般来園者が構造物に登ったり水に飛び込んだりするなど危険な行為があったため、一時的に閉鎖せざるを得なかったという。安全対策と監視体制が整わなければ、公開再開の決断は難しい。ではコミュニティーとして、それに対して何かできることはないだろうか？ JACCのワイアット館長に尋ねた。ワイアット氏は「美しいこの庭園は皆で楽しむべき大切な宝物。例えば定期的に庭園を見守ってくれるボランティアの協力があれば、非常に助かるだろう」と話した。

当時ボナ大学の上杉武夫教授が設計したもので、合流する二つの水の流が、日本生まれの1世と米国生まれの2世のつながりを象徴している。清流苑は協会の日本文化保存の献身的証であり、またこの庭園という生きた遺産を未来の世代に引き継ぐ決意を顕彰碑を通じて改めて表明した。この日、清流苑に、日系文化の礎となったガーデナーの功績を語り継ぐ場所が新たに加わったことで、日本庭園は日本文化の象徴であり、日本人移民の誇りでもあることが改めて確認された。

「日本庭園保存会」を発足
保全に向け活動を本格化
日系家庭の庭はもとより米国には公衆施設としての日本庭園も多く、南カリフォルニアに40園以上、全米に90園以上の本格日本庭園があるとされる。専門知識を持つ日系ガーデナーの不足により正しい管理が損なわれ、これらの庭園の荒廃につながることを懸念されている。こうした背景を受け2022年、SCGFは日本庭園保存会を発足し、会員の知識や経験を生かして、美しい日本庭園の保全に向けた活動を本格化させている。

「日本庭園保存会」は、若い世代が連盟に来て日本庭園に関する知識を学び、将来に庭園の手入れができるようになることを願っている。「連盟はそのための情報源として機能し、教育の場にもなりたいと考えている」と話す。昨今は、会員も以前のようにはボランティア活動に多くの時間を割くことは難しくなっている。高齢化もあるだろうし、ガソリン代や道具、保険、生活費なども高騰している。だがヤマサキ氏は「それでも、庭園の手入れ方法を理解し、それを守ることがわれわれの主な使命だと考えている」と言う。「日本庭園を理解する手がけるには、日本文化を理解が不可欠であり、文化を理解せずに庭園を作るのは非常に困難である。SCGFは他の多くの日系団体と関わる中で文化を学び、それを庭園に生かしていくことは非常に意義深く、実際にこの庭園そのものの成功の証しでもある」と言及した。

現在、残念ながら「清流苑」は保全上の理由により一般公開されておらず、イベントを通しての散策か、ノグチプラザから見下ろすの鑑賞に限定されている。JACCによるそれは一般来園者が構造物に登ったり水に飛び込んだりするなど危険な行為があったため、一時的に閉鎖せざるを得なかったという。安全対策と監視体制が整わなければ、公開再開の決断は難しい。ではコミュニティーとして、それに対して何かできることはないだろうか？ JACCのワイアット館長に尋ねた。ワイアット氏は「美しいこの庭園は皆で楽しむべき大切な宝物。例えば定期的に庭園を見守ってくれるボランティアの協力があれば、非常に助かるだろう」と話した。



【写真上】日米文化会館の清流苑に設置された「日系ガーデナー顕彰の碑」を除幕するヤマサキ会長と曾根総領事（同下）南加庭園業連盟の創立70周年を祝う来賓ら。左から5人目がヤマサキ会長

来賓からは南加県人協議会の大谷喜平会長、日系商工会議所のキティ・サンキ会長、JACCのパトリシア・ワイアット館長、カリフォルニア州議会のアル・ムラツチ議員、曾根健孝氏、そしてカナダから臨席したパトリシア・バー・ロビンソン協会長のレイモンド・イナオカ会長が祝辞を述べた。現在在州議会で唯の日系人議員のムラツチ氏は「われわれはガーデナーの先人の背中の上に立っている」と述べ、

「彼らは自分の子どもたちのために犠牲を払い、腰を折って必死に働いた」と先人たちの生き様に敬意を表した。

ドクターは言いました。「指先のまひを防ぐために、手の平の首首から上向かって少し切るから。よく分かりますが、あなただけに任せます。はい、どうぞ」おかげさまで傷痕きれいに治り、今は線になつてゐるんですが、小指から降りてくる線とつながって、手首までの長い1本の線ができてしましました。手相が変わりました。

「近頃は急激な気配を察知して緊急連絡網で家族や仲間と危険を知らせ、族大移動を決めたに違いないと、見事な危機管理体制でした。ご近所がベストコントロールやネズミ退治用のチーズで苦戦していたことを考えると、自然の摂理は、人間を超えるものだ、私は深くうなずいたので、改めて己年を調べてみますと、「復活・再生」とありました。私は4月の初めに手首の手術を受け、去年、首首折をなす時、固定して治したんです。どうも接合の具合が良くありません。

「日本庭園保存会」は、若い世代が連盟に来て日本庭園に関する知識を学び、将来に庭園の手入れができるようになることを願っている。「連盟はそのための情報源として機能し、教育の場にもなりたいと考えている」と話す。昨今は、会員も以前のようにはボランティア活動に多くの時間を割くことは難しくなっている。高齢化もあるだろうし、ガソリン代や道具、保険、生活費なども高騰している。だがヤマサキ氏は「それでも、庭園の手入れ方法を理解し、それを守ることがわれわれの主な使命だと考えている」と言う。「日本庭園を理解する手がけるには、日本文化を理解が不可欠であり、文化を理解せずに庭園を作るのは非常に困難である。SCGFは他の多くの日系団体と関わる中で文化を学び、それを庭園に生かしていくことは非常に意義深く、実際にこの庭園そのものの成功の証しでもある」と言及した。

現在、残念ながら「清流苑」は保全上の理由により一般公開されておらず、イベントを通しての散策か、ノグチプラザから見下ろすの鑑賞に限定されている。JACCによるそれは一般来園者が構造物に登ったり水に飛び込んだりするなど危険な行為があったため、一時的に閉鎖せざるを得なかったという。安全対策と監視体制が整わなければ、公開再開の決断は難しい。ではコミュニティーとして、それに対して何かできることはないだろうか？ JACCのワイアット館長に尋ねた。ワイアット氏は「美しいこの庭園は皆で楽しむべき大切な宝物。例えば定期的に庭園を見守ってくれるボランティアの協力があれば、非常に助かるだろう」と話した。

当時ボナ大学の上杉武夫教授が設計したもので、合流する二つの水の流が、日本生まれの1世と米国生まれの2世のつながりを象徴している。清流苑は協会の日本文化保存の献身的証であり、またこの庭園という生きた遺産を未来の世代に引き継ぐ決意を顕彰碑を通じて改めて表明した。この日、清流苑に、日系文化の礎となったガーデナーの功績を語り継ぐ場所が新たに加わったことで、日本庭園は日本文化の象徴であり、日本人移民の誇りでもあることが改めて確認された。

「日本庭園保存会」は、若い世代が連盟に来て日本庭園に関する知識を学び、将来に庭園の手入れができるようになることを願っている。「連盟はそのための情報源として機能し、教育の場にもなりたいと考えている」と話す。昨今は、会員も以前のようにはボランティア活動に多くの時間を割くことは難しくなっている。高齢化もあるだろうし、ガソリン代や道具、保険、生活費なども高騰している。だがヤマサキ氏は「それでも、庭園の手入れ方法を理解し、それを守ることがわれわれの主な使命だと考えている」と言う。「日本庭園を理解する手がけるには、日本文化を理解が不可欠であり、文化を理解せずに庭園を作るのは非常に困難である。SCGFは他の多くの日系団体と関わる中で文化を学び、それを庭園に生かしていくことは非常に意義深く、実際にこの庭園そのものの成功の証しでもある」と言及した。

現在、残念ながら「清流苑」は保全上の理由により一般公開されておらず、イベントを通しての散策か、ノグチプラザから見下ろすの鑑賞に限定されている。JACCによるそれは一般来園者が構造物に登ったり水に飛び込んだりするなど危険な行為があったため、一時的に閉鎖せざるを得なかったという。安全対策と監視体制が整わなければ、公開再開の決断は難しい。ではコミュニティーとして、それに対して何かできることはないだろうか？ JACCのワイアット館長に尋ねた。ワイアット氏は「美しいこの庭園は皆で楽しむべき大切な宝物。例えば定期的に庭園を見守ってくれるボランティアの協力があれば、非常に助かるだろう」と話した。

4月は下旬のことでした。春を奏でるような微風に庭の草花は揺れ、心もちの良い日でした。私は庭仕事を一段落したところ、ベンチに腰かけ、白湯にミントを一枝入れたものなど楽しんでおりました。ベンチのあるセメント敷き淵は、土の庭との境にひきまはどに刈り込んだジャパニーズボックスウッド（ツゲ種の灌木）で囲ってあります。さて、ここからです。遠く

の空や木々を眺めていて、何気なく目を下ると、その若緑に輝くボックスウッドの茂みから、10センチほど細長いものが、スクッと出ていてはあきません。ヒヤッ！

あちち向きにたたずんでじっと動かないものがあります。ウソでしょ。私は感知したと同時に、それが害のないガーデンズネーだろーとは思いました。私に恐れは薄れて、縁起物としてすり替わってしまいました。と

振り返らたら、スルスルと茂みに消えていくところでした。あちち向きにたたずんでじっと動かないものがあります。ウソでしょ。私は感知したと同時に、それが害のないガーデンズネーだろーとは思いました。私に恐れは薄れて、縁起物としてすり替わってしまいました。と

私の近所ではここ数年、リスの一種で、地面に穴を掘り果を作り、その中にトンネルを掘って庭を荒らしてしまいう地リスに悩まされて、わが家もかしらでして。見た目はかわいいらしいんですけど、ところが、ガーデンスネークの登場から後、ピタッと地

かき分け、伸びてみたところ、が、たまたま私の目の前だったと想像できます。ジャパニーズボックスウッドの根元の土も、地リスが掘り返した跡がありました。地下トンネルに漂う異様な気配を察知して緊急連絡網で家族や仲間と危険を知らせ、族大移動を決めたに違いないと、見事な危機管理体制でした。ご近所がベストコントロールやネズミ退治用のチーズで苦戦していたことを考えると、自然の摂理は、人間を超えるものだ、私は深くうなずいたので、改めて己年を調べてみますと、「復活・再生」とありました。私は4月の初めに手首の手術を受け、去年、首首折をなす時、固定して治したんです。どうも接合の具合が良くありません。

「日本庭園保存会」は、若い世代が連盟に来て日本庭園に関する知識を学び、将来に庭園の手入れができるようになることを願っている。「連盟はそのための情報源として機能し、教育の場にもなりたいと考えている」と話す。昨今は、会員も以前のようにはボランティア活動に多くの時間を割くことは難しくなっている。高齢化もあるだろうし、ガソリン代や道具、保険、生活費なども高騰している。だがヤマサキ氏は「それでも、庭園の手入れ方法を理解し、それを守ることがわれわれの主な使命だと考えている」と言う。「日本庭園を理解する手がけるには、日本文化を理解が不可欠であり、文化を理解せずに庭園を作るのは非常に困難である。SCGFは他の多くの日系団体と関わる中で文化を学び、それを庭園に生かしていくことは非常に意義深く、実際にこの庭園そのものの成功の証しでもある」と言及した。

現在、残念ながら「清流苑」は保全上の理由により一般公開されておらず、イベントを通しての散策か、ノグチプラザから見下ろすの鑑賞に限定されている。JACCによるそれは一般来園者が構造物に登ったり水に飛び込んだりするなど危険な行為があったため、一時的に閉鎖せざるを得なかったという。安全対策と監視体制が整わなければ、公開再開の決断は難しい。ではコミュニティーとして、それに対して何かできることはないだろうか？ JACCのワイアット館長に尋ねた。ワイアット氏は「美しいこの庭園は皆で楽しむべき大切な宝物。例えば定期的に庭園を見守ってくれるボランティアの協力があれば、非常に助かるだろう」と話した。

当時ボナ大学の上杉武夫教授が設計したもので、合流する二つの水の流が、日本生まれの1世と米国生まれの2世のつながりを象徴している。清流苑は協会の日本文化保存の献身的証であり、またこの庭園という生きた遺産を未来の世代に引き継ぐ決意を顕彰碑を通じて改めて表明した。この日、清流苑に、日系文化の礎となったガーデナーの功績を語り継ぐ場所が新たに加わったことで、日本庭園は日本文化の象徴であり、日本人移民の誇りでもあることが改めて確認された。

「日本庭園保存会」は、若い世代が連盟に来て日本庭園に関する知識を学び、将来に庭園の手入れができるようになることを願っている。「連盟はそのための情報源として機能し、教育の場にもなりたいと考えている」と話す。昨今は、会員も以前のようにはボランティア活動に多くの時間を割くことは難しくなっている。高齢化もあるだろうし、ガソリン代や道具、保険、生活費なども高騰している。だがヤマサキ氏は「それでも、庭園の手入れ方法を理解し、それを守ることがわれわれの主な使命だと考えている」と言う。「日本庭園を理解する手がけるには、日本文化を理解が不可欠であり、文化を理解せずに庭園を作るのは非常に困難である。SCGFは他の多くの日系団体と関わる中で文化を学び、それを庭園に生かしていくことは非常に意義深く、実際にこの庭園そのものの成功の証しでもある」と言及した。

現在、残念ながら「清流苑」は保全上の理由により一般公開されておらず、イベントを通しての散策か、ノグチプラザから見下ろすの鑑賞に限定されている。JACCによるそれは一般来園者が構造物に登ったり水に飛び込んだりするなど危険な行為があったため、一時的に閉鎖せざるを得なかったという。安全対策と監視体制が整わなければ、公開再開の決断は難しい。ではコミュニティーとして、それに対して何かできることはないだろうか？ JACCのワイアット館長に尋ねた。ワイアット氏は「美しいこの庭園は皆で楽しむべき大切な宝物。例えば定期的に庭園を見守ってくれるボランティアの協力があれば、非常に助かるだろう」と話した。

当時ボナ大学の上杉武夫教授が設計したもので、合流する二つの水の流が、日本生まれの1世と米国生まれの2世のつながりを象徴している。清流苑は協会の日本文化保存の献身的証であり、またこの庭園という生きた遺産を未来の世代に引き継ぐ決意を顕彰碑を通じて改めて表明した。この日、清流苑に、日系文化の礎となったガーデナーの功績を語り継ぐ場所が新たに加わったことで、日本庭園は日本文化の象徴であり、日本人移民の誇りでもあることが改めて確認された。

「日本庭園保存会」は、若い世代が連盟に来て日本庭園に関する知識を学び、将来に庭園の手入れができるようになることを願っている。「連盟はそのための情報源として機能し、教育の場にもなりたいと考えている」と話す。昨今は、会員も以前のようにはボランティア活動に多くの時間を割くことは難しくなっている。高齢化もあるだろうし、ガソリン代や道具、保険、生活費なども高騰している。だがヤマサキ氏は「それでも、庭園の手入れ方法を理解し、それを守ることがわれわれの主な使命だと考えている」と言う。「日本庭園を理解する手がけるには、日本文化を理解が不可欠であり、文化を理解せずに庭園を作るのは非常に困難である。SCGFは他の多くの日系団体と関わる中で文化を学び、それを庭園に生かしていくことは非常に意義深く、実際にこの庭園そのものの成功の証しでもある」と言及した。

現在、残念ながら「清流苑」は保全上の理由により一般公開されておらず、イベントを通しての散策か、ノグチプラザから見下ろすの鑑賞に限定されている。JACCによるそれは一般来園者が構造物に登ったり水に飛び込んだりするなど危険な行為があったため、一時的に閉鎖せざるを得なかったという。安全対策と監視体制が整わなければ、公開再開の決断は難しい。ではコミュニティーとして、それに対して何かできることはないだろうか？ JACCのワイアット館長に尋ねた。ワイアット氏は「美しいこの庭園は皆で楽しむべき大切な宝物。例えば定期的に庭園を見守ってくれるボランティアの協力があれば、非常に助かるだろう」と話した。

「日本庭園保存会」は、若い世代が連盟に来て日本庭園に関する知識を学び、将来に庭園の手入れができるようになることを願っている。「連盟はそのための情報源として機能し、教育の場にもなりたいと考えている」と話す。昨今は、会員も以前のようにはボランティア活動に多くの時間を割くことは難しくなっている。高齢化もあるだろうし、ガソリン代や道具、保険、生活費なども高騰している。だがヤマサキ氏は「それでも、庭園の手入れ方法を理解し、それを守ることがわれわれの主な使命だと考えている」と言う。「日本庭園を理解する手がけるには、日本文化を理解が不可欠であり、文化を理解せずに庭園を作るのは非常に困難である。SCGFは他の多くの日系団体と関わる中で文化を学び、それを庭園に生かしていくことは非常に意義深く、実際にこの庭園そのものの成功の証しでもある」と言及した。

最新・最高の情報源
贈り物にも最適
お問い合わせや、広告掲載をご希望の方はお電話下さい。
羅府新報
(213) 629-2231

HONDA PLAZA DENTAL CLINIC
Los Angeles / Little Tokyo
400 East 2nd Street, Suite 207
Los Angeles, CA 90012
TEL: (213) 687-3895
The LOFT Dental Studio
Orange County / Costa Mesa
3151 Airway Ave., Ste. F-103
Costa Mesa, CA 92626
TEL: (714) 549-7030

Implantologist
Kouichi Itoh, D.D.S.
インプラントの相談を無料で！
お申し込みは電話にて各歯科医院にお願いします。また、インプラント以外にインビザライン歯列矯正や審美歯科についても質問に伊藤先生がお答えします。
お気軽にお問い合わせ下さい。
歯科医師 伊藤仰一

RAFU SHIMPO PUBLISHING / JA LIVING LEGACY
第100大隊・第442連隊・MIS 及び他の部隊に敬意を表して
PROUD TO SERVE
JAPANESE AMERICAN WORLD WAR II VETERANS
羅府新報とJapanese American Living Legacyの協力により作成された本書は400ページ以上におよび、第二次世界大戦に従軍した20,000人の日系兵士の名前を記載。第100歩兵大隊、第442連隊戦隊、アメリカ陸軍情報部、第1399歩兵大隊、婦人陸軍部隊をはじめ、その他の多くの部隊が含まれている。
『Proud to Serve』は有名な戦闘、個人のストーリー、歴史的な写真類など、今までに出版されたことのない多くの話題にもふれている。
お問い合わせ、ご注文: 213-629-2231
羅府新報

仏教会や教会のことを
広く皆さまにお伝えしましょう！
広告掲載についての詳細は
電話 (213)-629-2231、Fax (213) 687-0737 まで

Pain NoMore
薬草と有機ゲルマニウムからできた自然の抗痛ジェル！
打ち身・捻挫・筋肉痛・打撲
関節痛・肩、首の凝り・腰痛
虫刺され・しびれ etc
\$33 (4oz/113g) 送料、TAX込み
800.262.4687
MAGNUS
22301 S. Western Ave. #104 Torrance, CA 90501
info@magnususa.com www.magnusamerica.com

ご通知
福岡県出身
フエナバーク市在住
母 京免義江氏
（九〇歳）
二〇二五年四月十八日
午後四時三十分自宅で
死去致しました。
ここに生前のご厚意を
深謝し謹んでご通知申
上げます。
なお葬儀は福井葬儀社
に於いて執り行われま
した。
五月二十三日
喪主 長男
京免ケント 浩司
妻 ジェニファ
次女 京免ヘレン久栄
京免シャロン 道子
外親戚 同

南カリフォルニア地域鉄道局
公聴会の通知
2025-26 年度年次予算
メトロリンク通勤鉄道システムを運行する南カリフォルニア地域鉄道局 (SCRRA) は、2025-26 年度予算案の採択に関する公聴会を開催する。本公聴会は、以下の場所・日時に開催される SCRRA 理事会の議題に予定されている。
日時: 2025 年 6 月 27 日 午前 10 時
場所: ロサンゼルス都市圏交通局理事室
ワン・ゲートウェイ・プラザ 3F
ロサンゼルス市、カリフォルニア州 90012
2025-26 年度年次予算案の写しは、SCRRA 事務局（所在地: 900 番地、ウィルシャー・ブルバード、1500 特別室、ロサンゼルス市、カリフォルニア州 90017）において、2025 年 6 月 2 日から 2025 年 6 月 27 日、月曜日から金曜日の午前 8 時から午後 5 時まで、またウェブサイト www.metrolinktrains.com において電子形式により一般公開に供される。
5/30/25
CNS-3926811#
RAFU SHIMPO

久保田葬儀社
心のこもった日本スタイルのお葬式
日米両語によるきめ細かなサービス
毎日24時間電話対応
自宅・病院でのアレンジメントも可
T: 213・749・1449 License #FD929
911 Venice Blvd., LA, CA 90015
kubotamortuary.com

健康器具、健康食品は
掲載広告をチェック！
健康一番
あなたのニーズにあった
商品をお探し下さい
羅府新報の Classified も
お手伝いします
広告掲載をご希望の方は
電話 (213) 629-2231
Fax (213) 687-0737

5世代、日英両語、24時間いつでも
福井葬儀社
Fukui Mortuary, Inc. Lic#FD-808
Phone: (213) 626-0441 Fax: (213) 617-2781
707 East Temple Street, Los Angeles, CA 90012
www.fukui-mortuary.com

